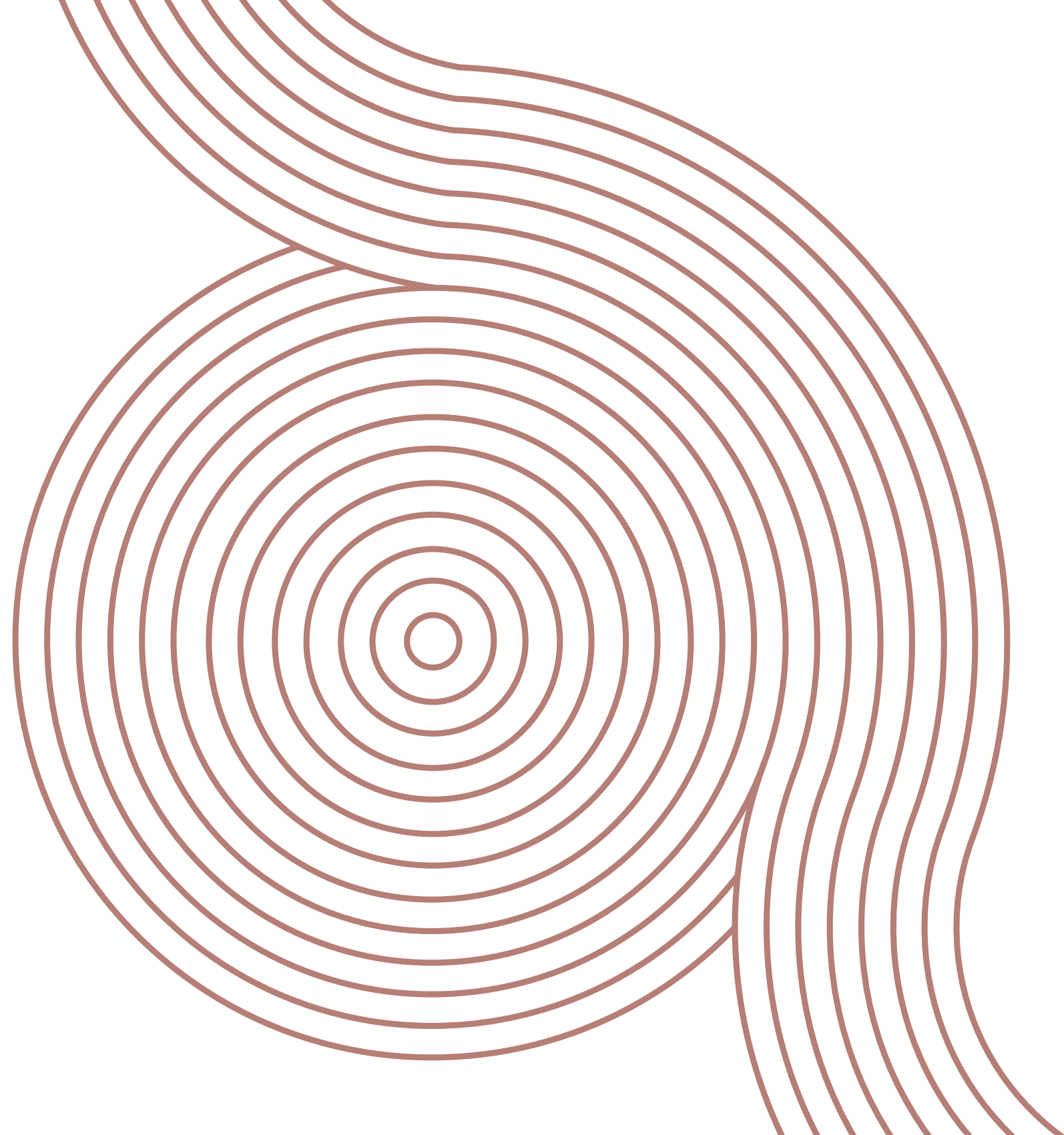


arkos





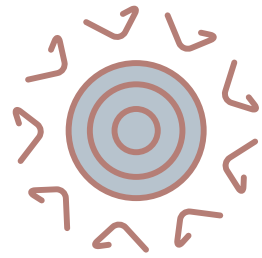
# PAINEL HPL

---

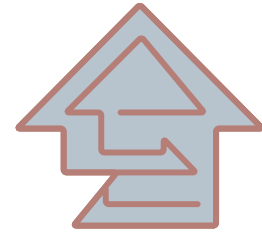
PAINÉIS LAMINADOS PARA FACHADAS VENTILADAS



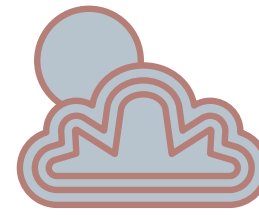
## Características



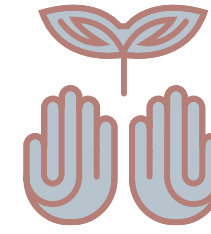
Proteção UV



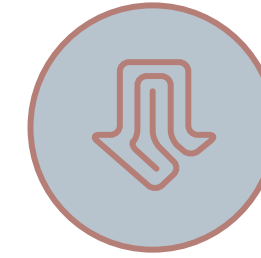
Alta durabilidade



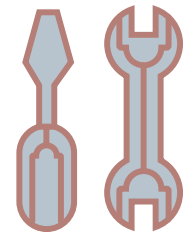
Aplicável em todos os tipos de clima



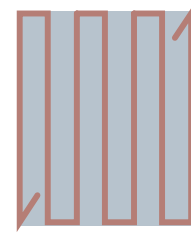
Responsabilidade ambiental



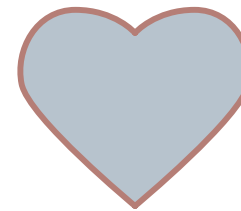
Fácil instalação



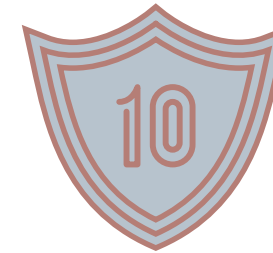
Não requer manutenção



Fachada sustentável



Vida útil de mais de 20 anos



Garantia de 10 anos



# POINEL HPL

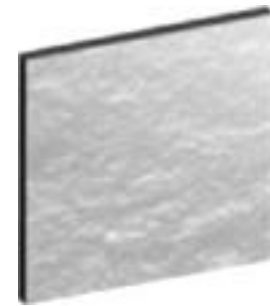
## TIPOS DE ACABAMENTO



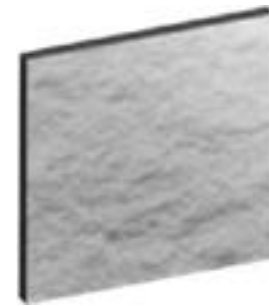
satin



matt



rock



matt-rock



diffuse



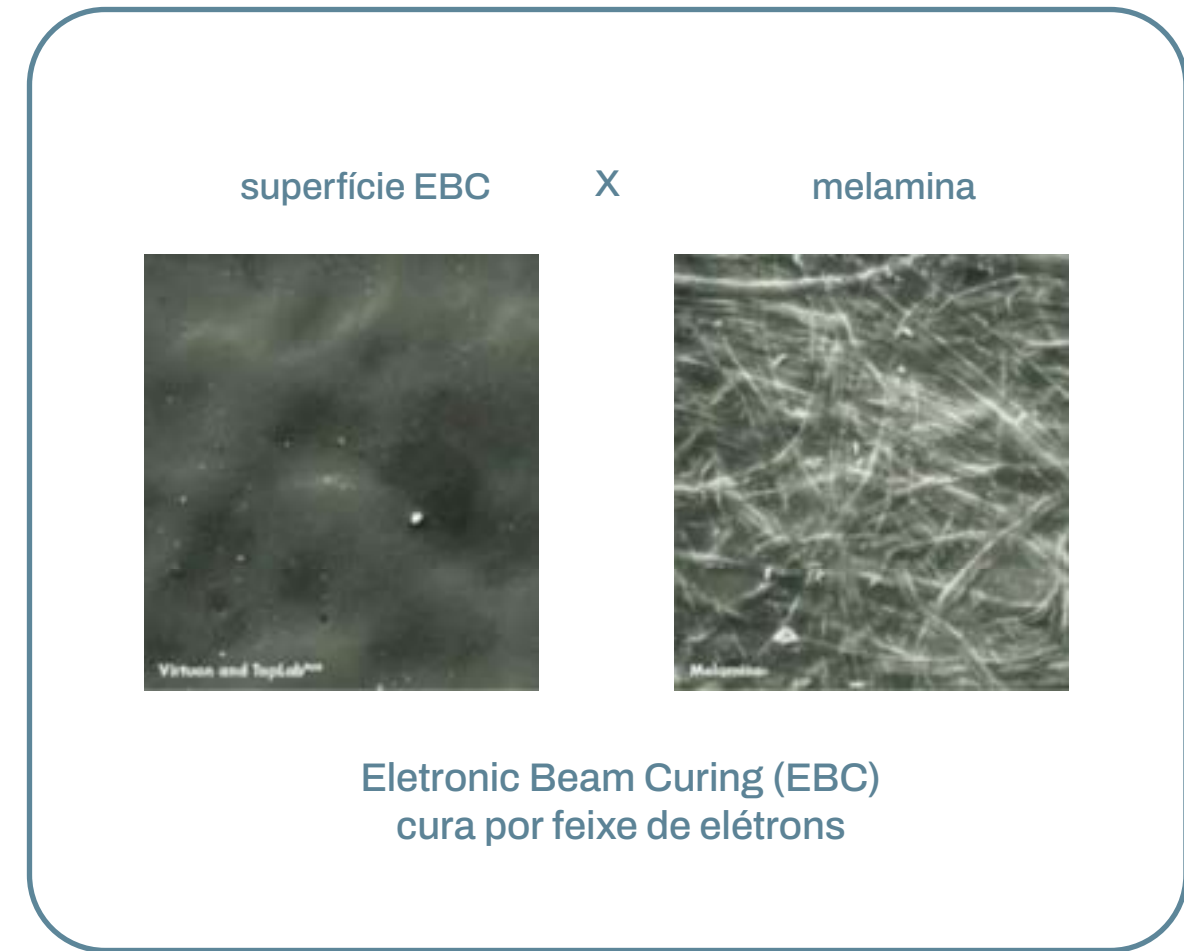
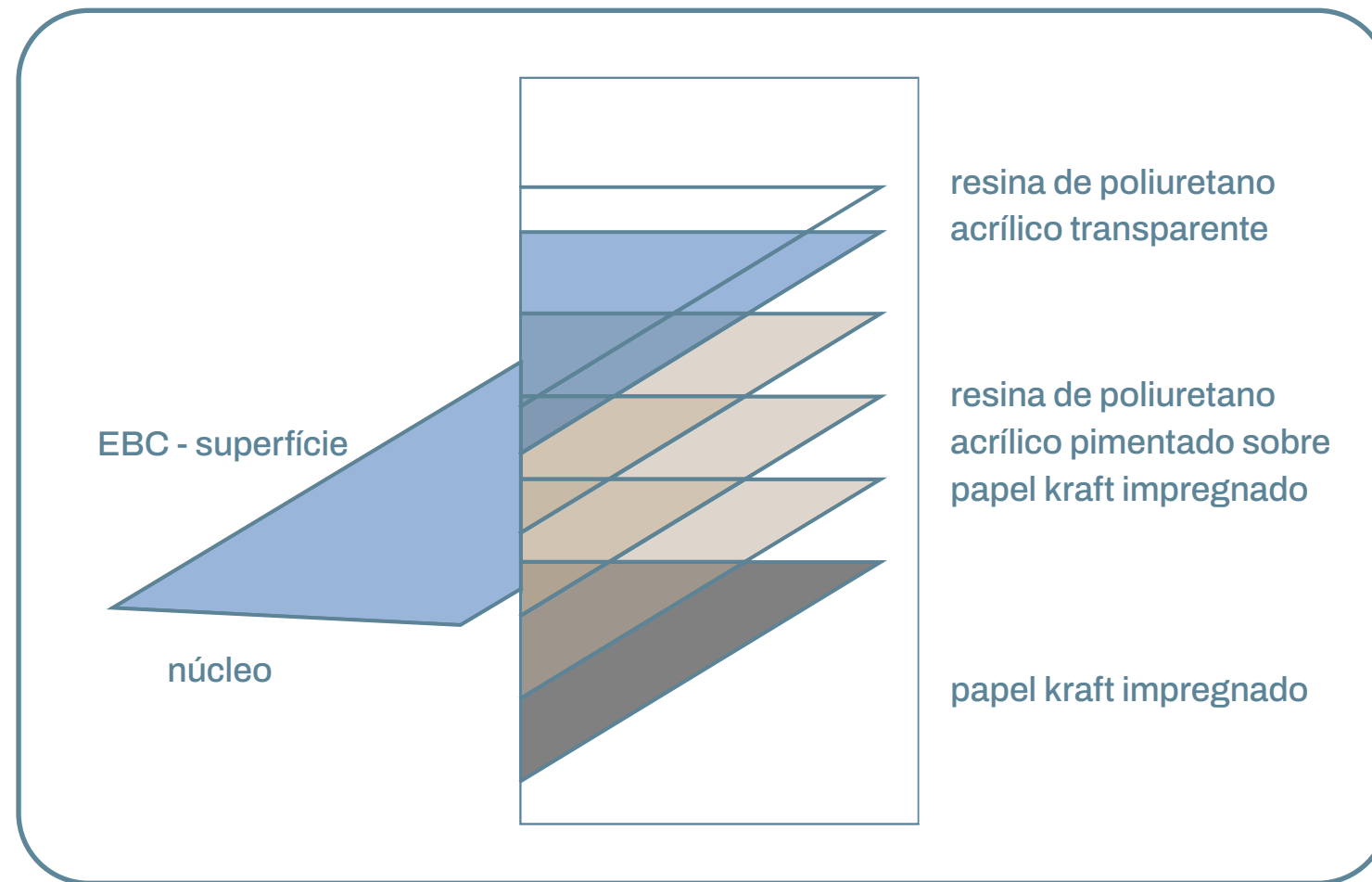
oblique



specular

# POINEL HPL

## COMPOSIÇÃO



# POINEL HPL

## CORES DISPONÍVEIS UNI COLOURS



Pure White  
A05.0.0



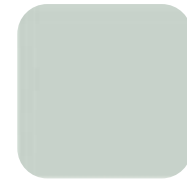
White  
A03.0.0



Pearl Yellow  
A04.0.1



Pale Yellow  
A04.0.2



Translucent Green  
A32.2.1



Verdigris  
A30.3.2



Aquamarine  
A28.2.1



Pastel Grey  
A03.1.0



Winter Grey  
A21.1.0



Ocean Grey  
A11.3.1



Papyrus White  
A05.1.0



Cream White  
A04.0.0



Chamoagne  
A05.1.2



Zinc Yellow  
A04.0.5



Mojito Green  
A41.0.6



Spring Green  
A37.2.3



Cactus Green  
A35.4.0



Silver Grey  
A03.4.0



Bluish Grey  
A22.2.1



Steel Blue  
A24.4.1



Stone Beige  
A05.1.1



Sand  
A07.1.1



Sun Yellow  
A05.1.4



Gold Yellow  
A04.1.7



Lime Green  
A37.0.8



Turf Green  
A36.3.5



Brilliant Green  
A33.3.6



Mid Green  
A28.6.2



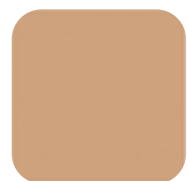
Pacific  
A26.5.4



Dark Green  
A32.7.2



Mid Beige  
A08.2.1



Salmon  
A08.2.3



Ochre  
A06.3.5



Red Orange  
A10.1.8



Passion Red  
A12.1.8



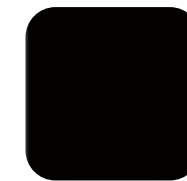
Carmine Red  
A12.3.7



East Red  
A12.4.5



Dark Brown  
A08.8.1



Black  
A90.0.0



Anthracite Grey  
A25.8.1

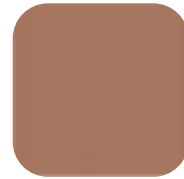


# POINEL HPL

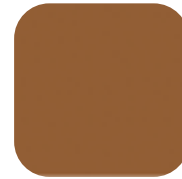
## CORES DISPONÍVEIS UNI COLOURS



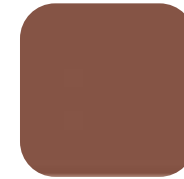
Stone Grey  
A08.3.1



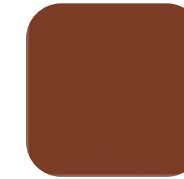
Terra Cotta  
A10.3.4



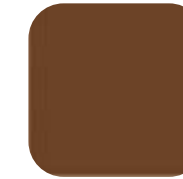
Rusty Red  
A08.4.5



English Red  
A11.4.4



Sienna Brown  
A10.4.5



Mahogany Red  
A09.6.4



Wine Red  
A12.6.3



Deep Red Brown  
A14.7.2



Ceramic Greige  
A11.8.0



Natural Greige  
A06.7.1



Mineral Blue  
A23.0.4



Powder Blue  
A22.2.4



Dark Denim  
A22.6.2



Lavander Blue  
A20.5.2



Royal Blue  
A22.1.6



Brilliant Blue  
A22.4.4



Cobalt Blue  
A21.5.4



Cyclam  
A17.3.5



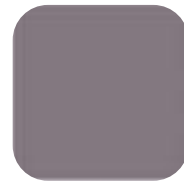
Forest Green  
A34.8.1



Dark Blue  
A20.7.2



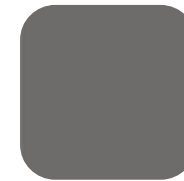
Steel Grey  
A21.7.0



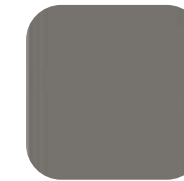
Mauve  
A16.5.1



Charcoal Grey  
A19.7.1



Slate Grey  
A70.0.0



Quartz Grey  
A05.5.0



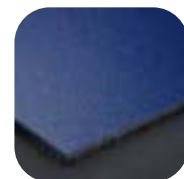
Mid Grey  
A21.5.1



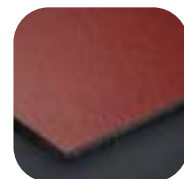
Toscana Greige  
A06.5.1



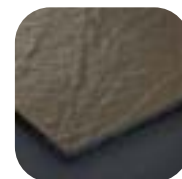
Taupe  
A10.6.1



Cobalt Blue  
SATIN - A.21.5.4



Carmine Red  
SATIN - A12.3.7



Toscana Greige  
SATIN - A.06.5.1



Anthracite Grey  
SATIN - A.25.8.1

# POINEL HPL

## CORES DISPONÍVEIS WOOD DECORS



Core Ash  
NW26



Woodstone  
NW29



Halmstad  
NW28



Greyed Cedar  
NW24



Milano Grigio  
NW17



Hesbania  
NW25



Slate Wood  
KNW22



Denver Oak  
NW27



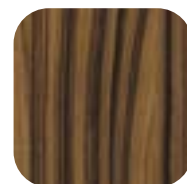
Elegant Oak  
NW02



Milano Terra  
NW16



Loft Brown  
NW05



Santos Palisander  
NW11



Country Wood  
NW13



Nordic Black  
NW23



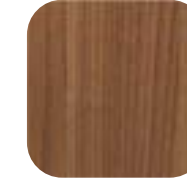
Milano Sabbia  
NW15



French Walnut  
NW14



Harmony Oak  
KNW03



English Cherry  
NW10



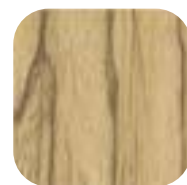
Pacific Board  
NW04



Tropical Ipe  
NW30



Wenge  
NW09



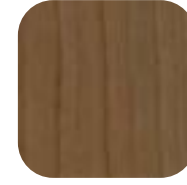
Natural Bagenda  
NW12



Montreaux Amber  
NW06



Montreaux Sun glow  
NW07



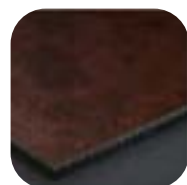
Italian Walnut  
NW08



Light Mahogany  
NW18



Dark Mahogany  
NW19



Dark Mahogany  
SATIN - NW19



Slate Wood  
MATT - NW22

# POINEL HPL

## CORES DISPONÍVEIS NATURALS



French Limestone  
NA11



Natural Chalkstone  
NA12



Silver Quartzite  
NA13



Weathered Basalt  
NA14



Indian Terra Cotta  
NM15



Rusted Brown  
NM01



Crafted White  
NM08



Forged Alloy  
NM02



Sintered Alloy  
NM04



Hardened Brown  
NM05



Natural Slate  
NA18



Italian Style  
NA19



Corroded Green  
KNM03



Tempered Grey  
NM06



Casted Grey  
NM07



Belgium Bluestone  
NA16



Natural Graphite  
NA17



Weathered Basalt  
MATT ROCK - NA14



Rusted Brown  
MATT - NM01



Coasted Grey  
MATT - NM07

# POINEL HPL

## CORES DISPONÍVEIS METALLICS



Aluminium Grey  
M510.1



Titanium Silver  
M04.4.1



Titanium Bronze  
M05.5.1



Amber  
M06.4.1



Mustard Yellow  
M40.4.3



Malachite Green  
M35.7.1



Graphite Grey  
M21.8.1



Copper Yellow  
M53.0.2



Copper Red  
M53.0.1



Deep Copper  
M10.5.5



Urban Brown  
M05.6.1



Urban Grey  
M51.0.2



Azurite Blue  
M21.3.4

# POANEL HPL

## CORES DISPONÍVEIS FOCUS



Bilbao Tierra  
CM06.21



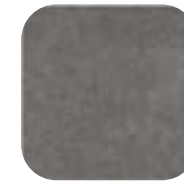
Bilbao Sombra  
CM06.25



Bilbao Selva  
SO06.24



Tribeca Gold  
CM03.06



Tribeca Bronze  
CM03.10



Tribeca Iron  
CM03.16



Tribeca Zinc  
CM03.24



Chester Grey  
C.01.21



Chester Cement  
C01.70



Chester Anthracite  
C01.25



Santiago Blanco  
CM-5.04



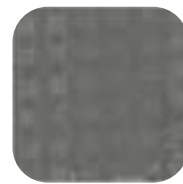
Santiago Gris  
CM05.21



Santiago Noche  
CM05.25



Brooklyn Classic  
C08.03



Brooklyn Luna  
M08.21



Brooklyn Anthracite  
C08.25



Brooklyn Aluminium  
CM09.51



Brooklyn Steel  
CM09.03



Brooklyn Bronze  
CM09.06



Graphite Grey  
SATIN - M21.8.1



Graphite Grey  
ROCK - M21.8.1



Brooklyn Classic  
DIFUSE - M08.03

# POINEL HPL

## CORES DISPONÍVEIS LUMEN



Paris Silver  
LM5101



China Gold  
LM0641



Roman Bronze  
LM0561



Siberian Platinum  
LM2181



Persian Copper  
LM1055



London Grey  
L2151



Alabama Grey  
L7000



Iceland Grey  
L1971



New York Grey  
L2581



Metropolis Black  
L9000



Athens White  
L0500



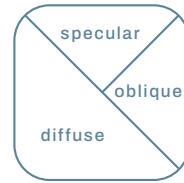
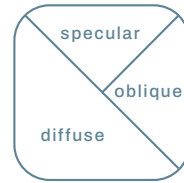
Italian Greige  
L0651

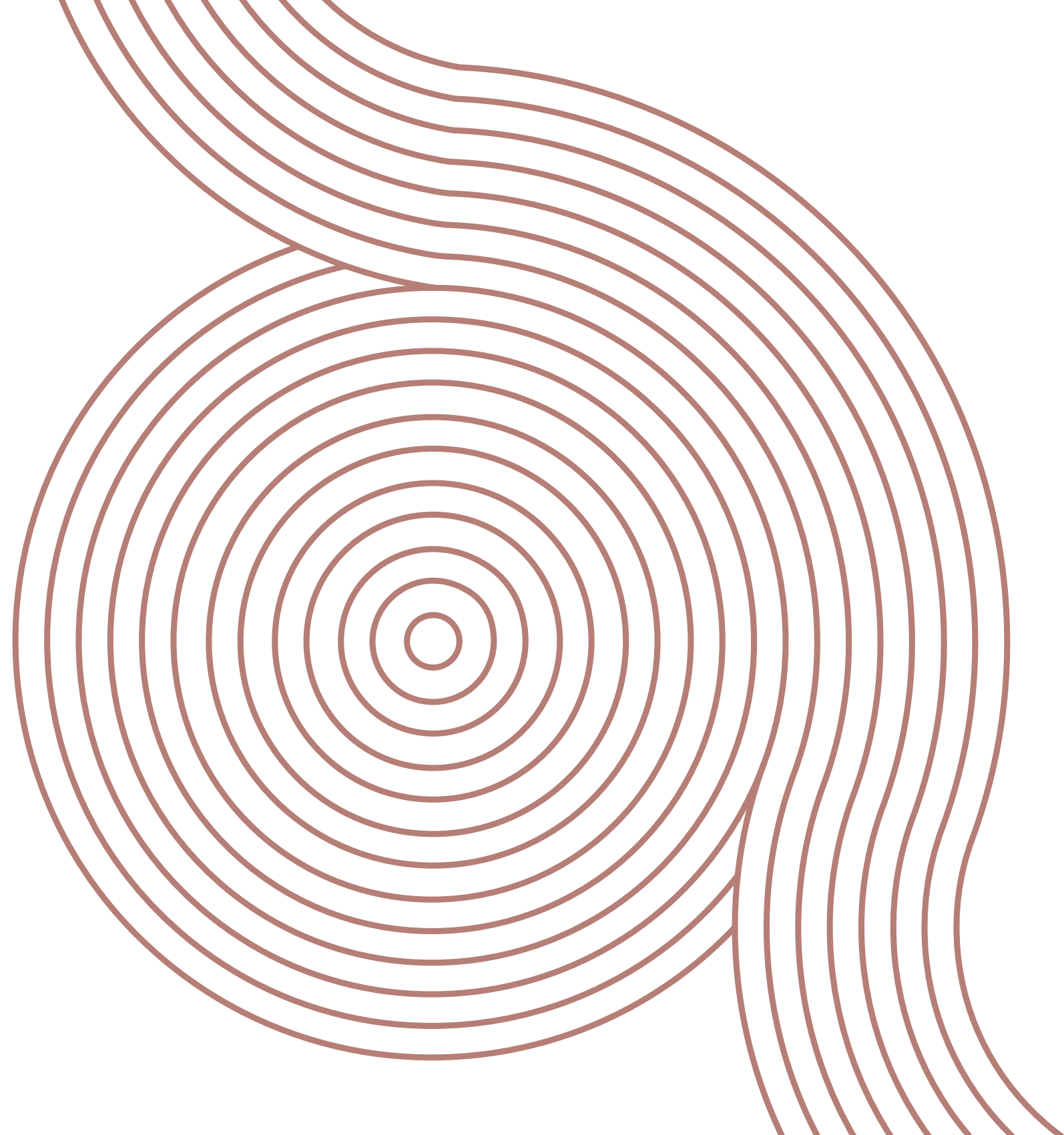


India Brown  
L0964



California Red  
L1245





# PAINEL HPL

---

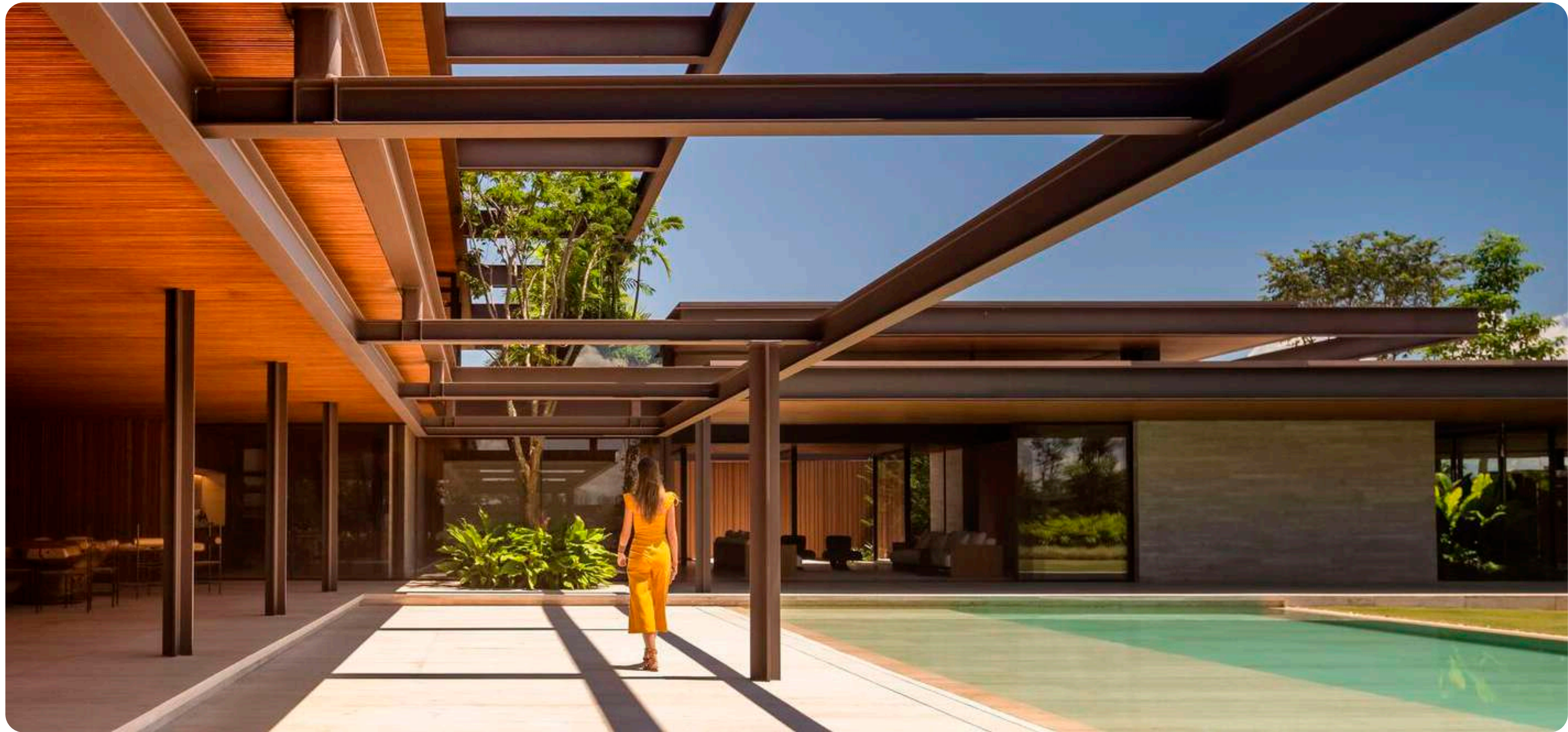
**PROJETOS  
RESIDENCIAIS**



**Casa Jaboticaba**

Fernanda Marques Arquitetos Associados  
São José dos Campos, SP









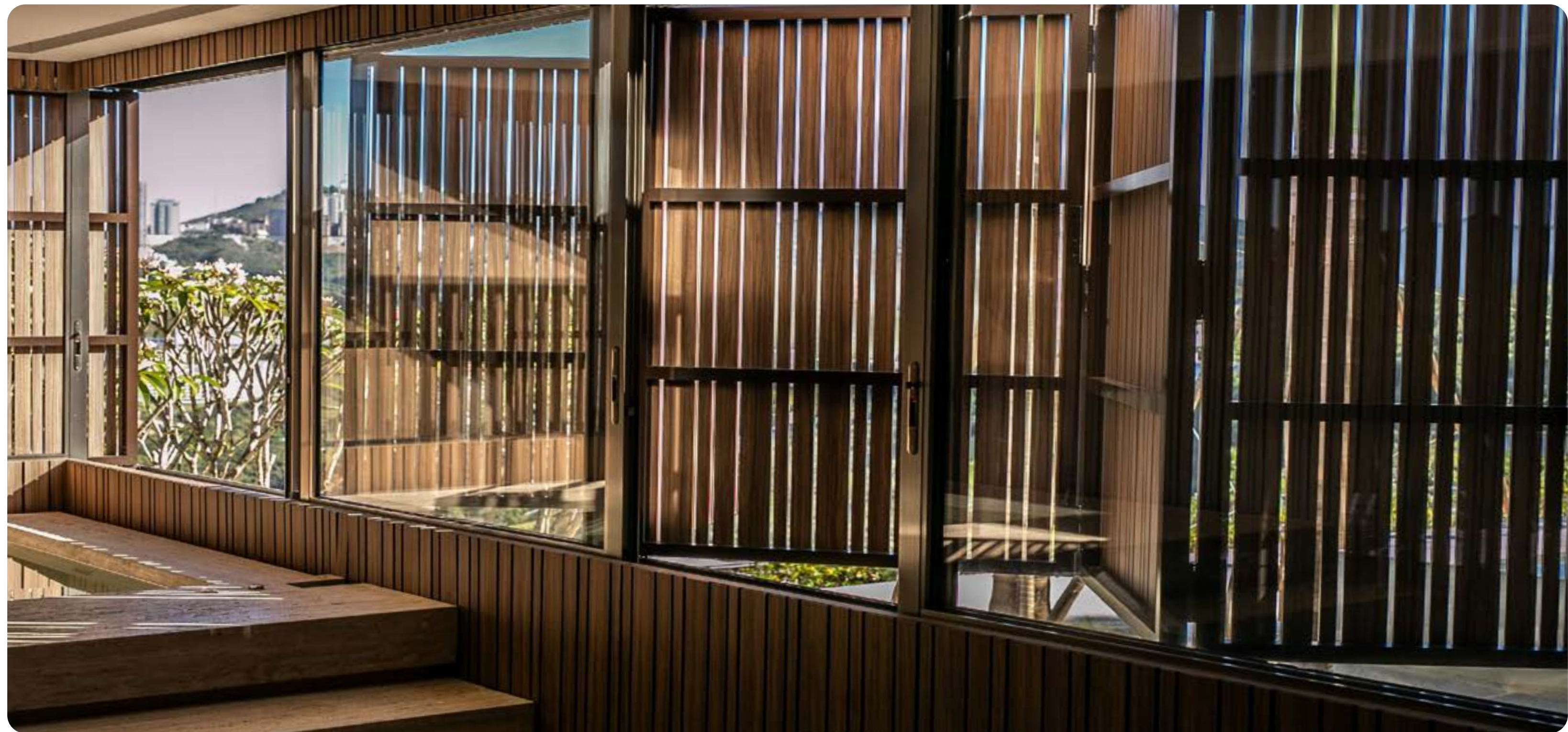
**Casa NL**  
Studio MK27  
Nova Lima, MG

















**Casa GM**

Jacobsen Arquitetura  
Bragança Paulista, SP





**Casa RMD**

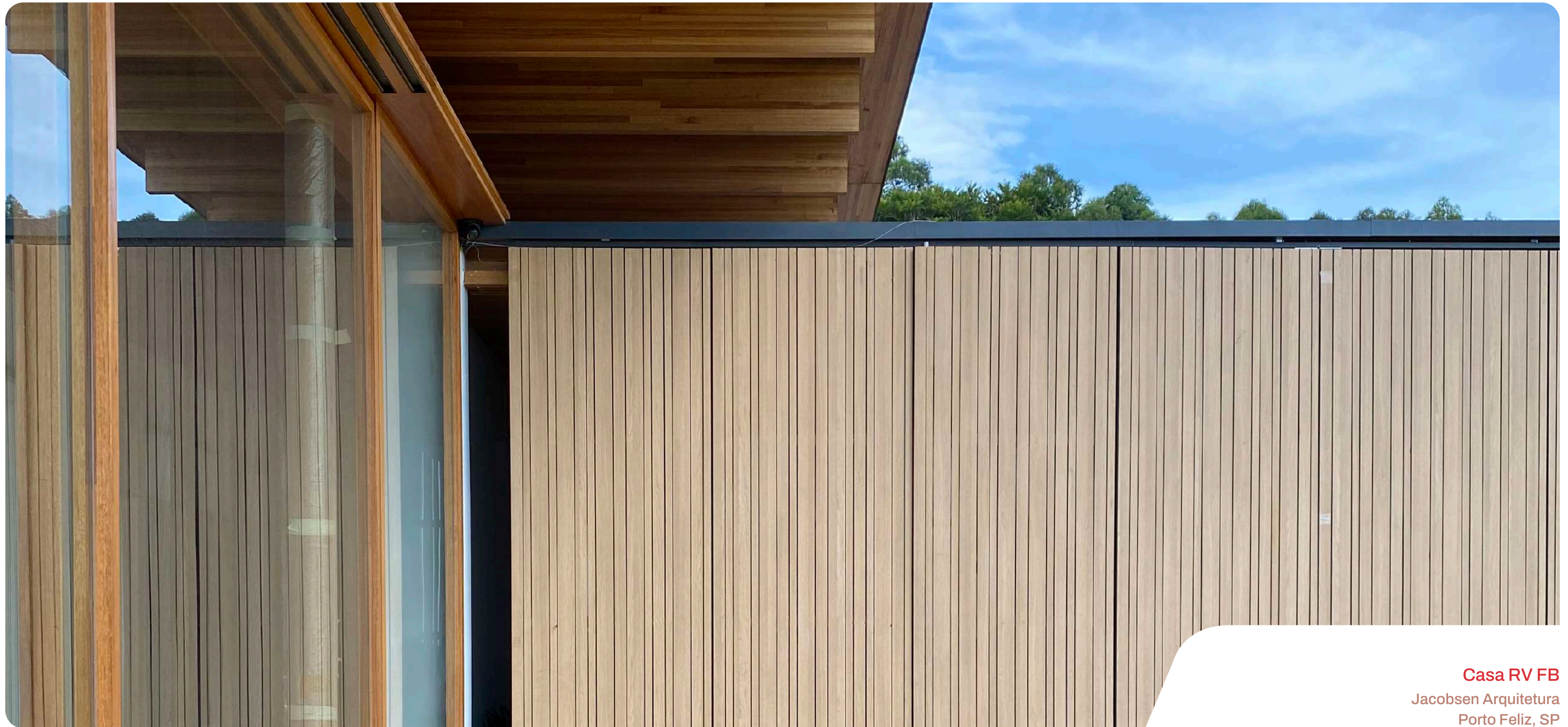
Jacobsen Arquitetura

Trespa 6mm NW02

SP







**Casa RV FB**

Jacobsen Arquitetura

Porto Feliz, SP

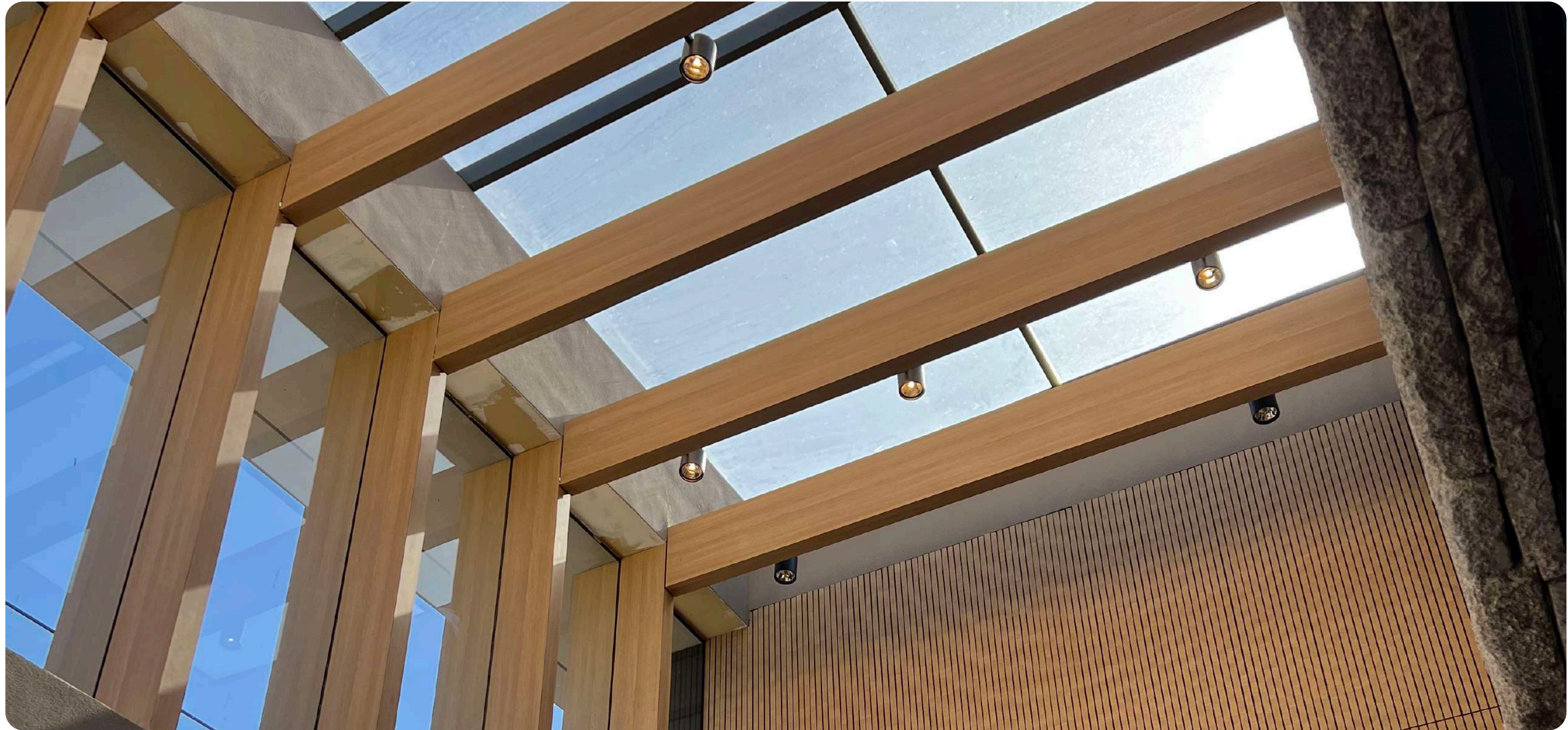


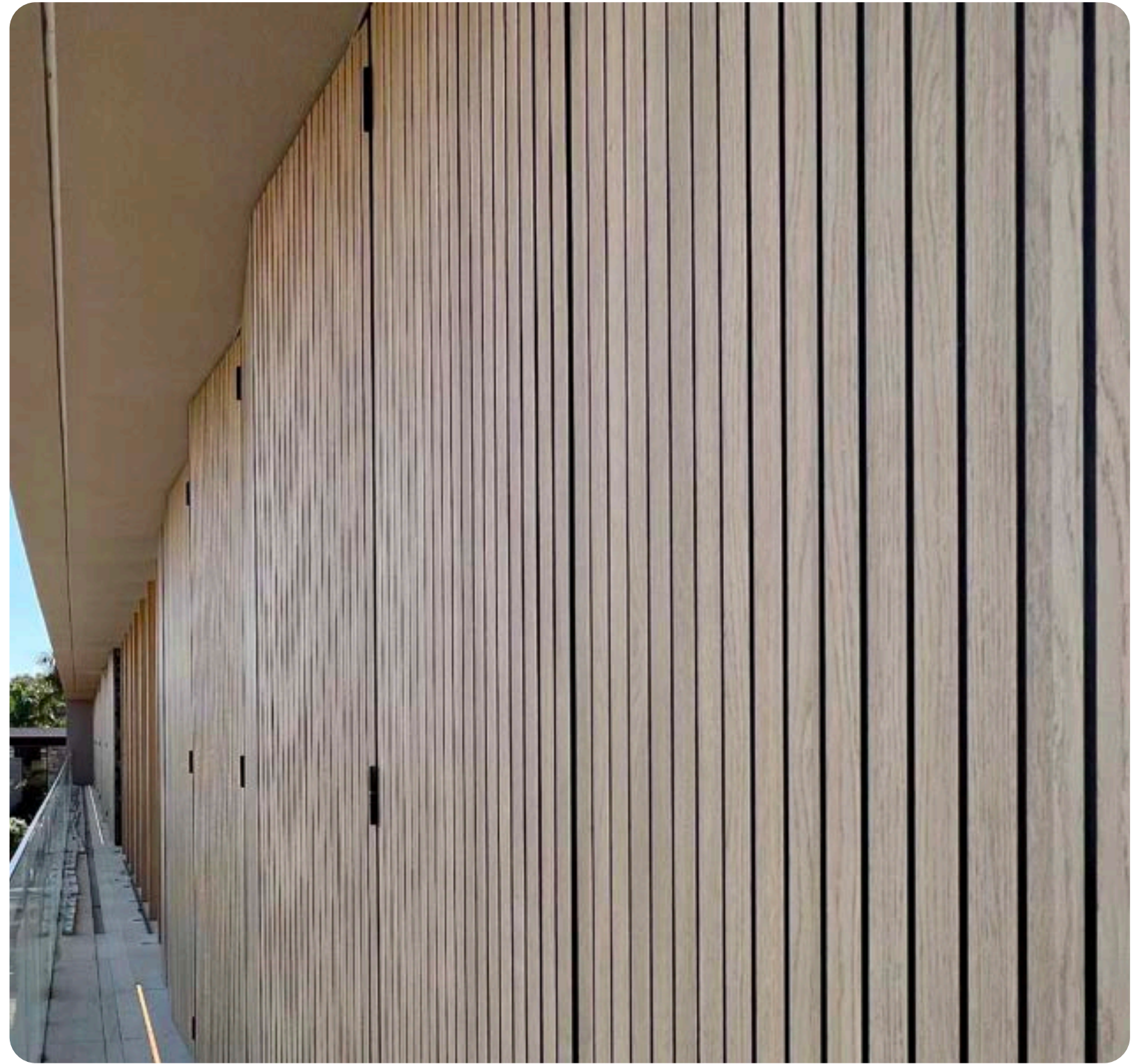
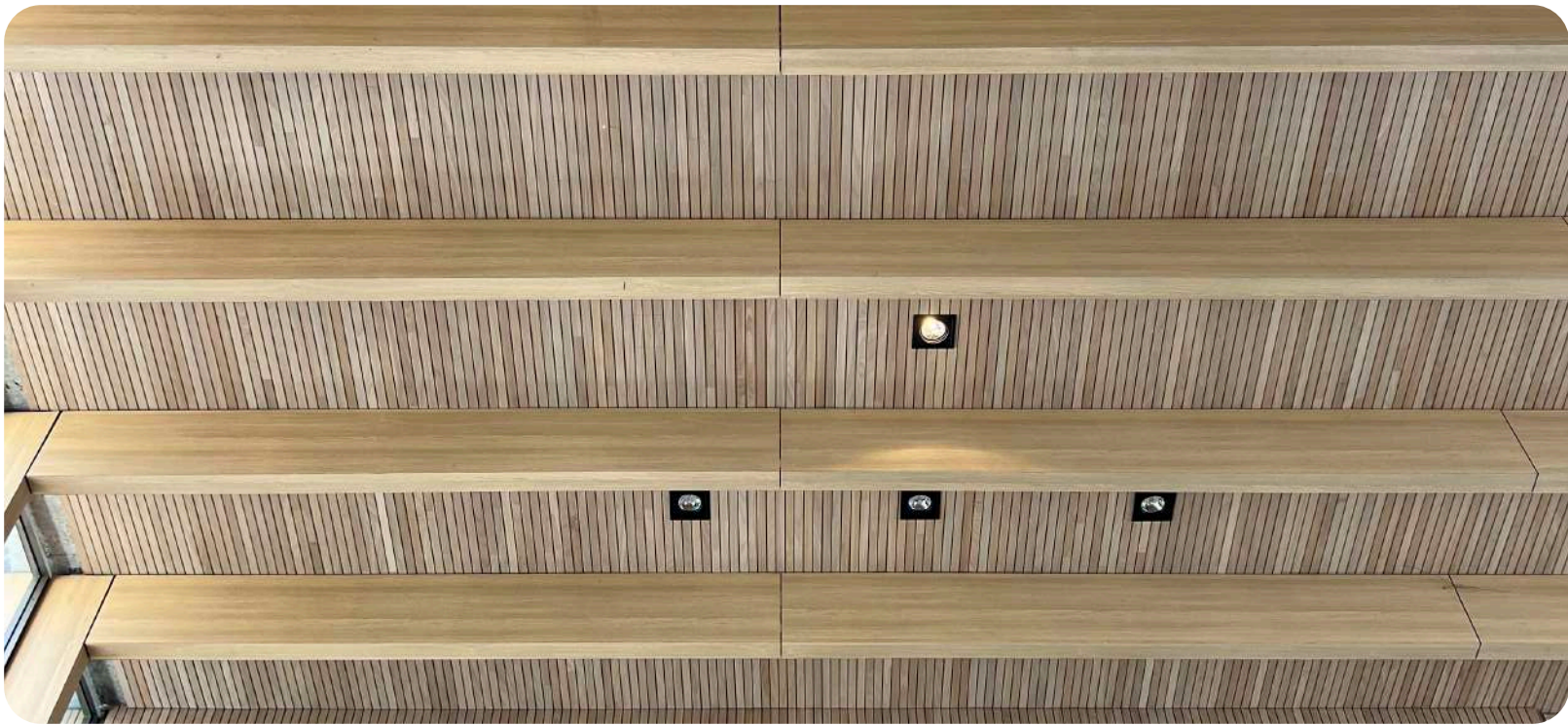
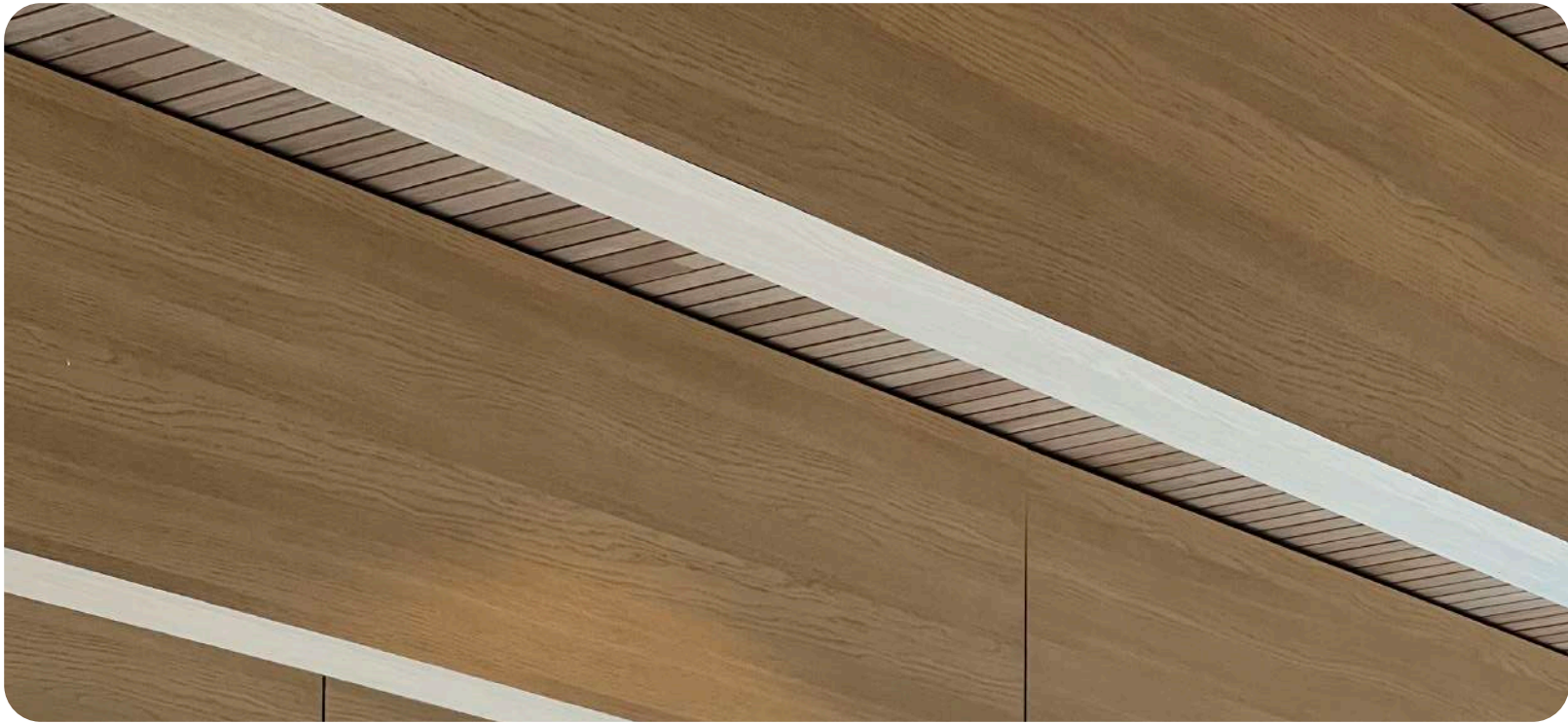


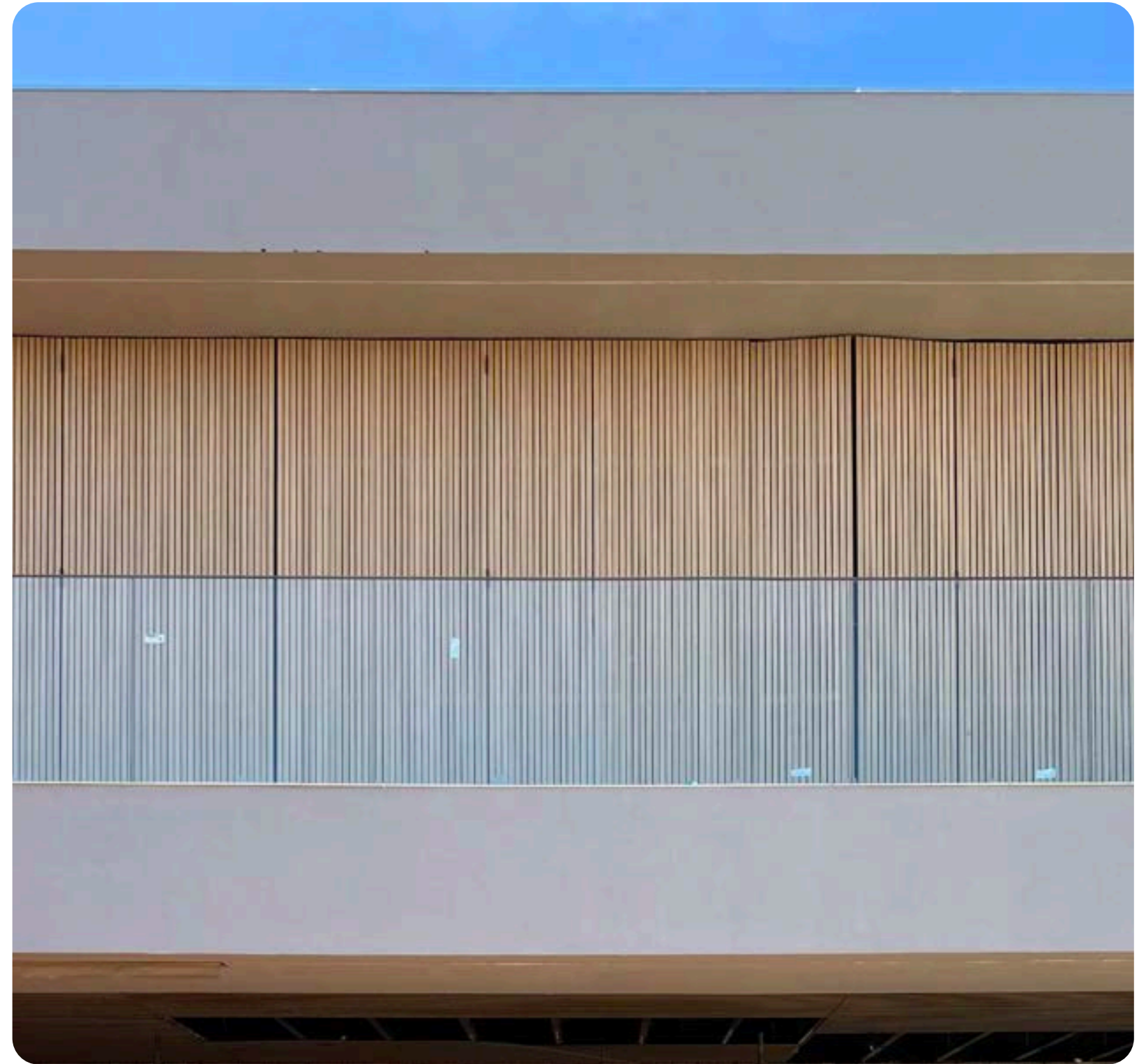


**Casa VP**

Roberto Migotto Arquitetura  
Trespa 6mm NW02  
Fazenda Boa Vista





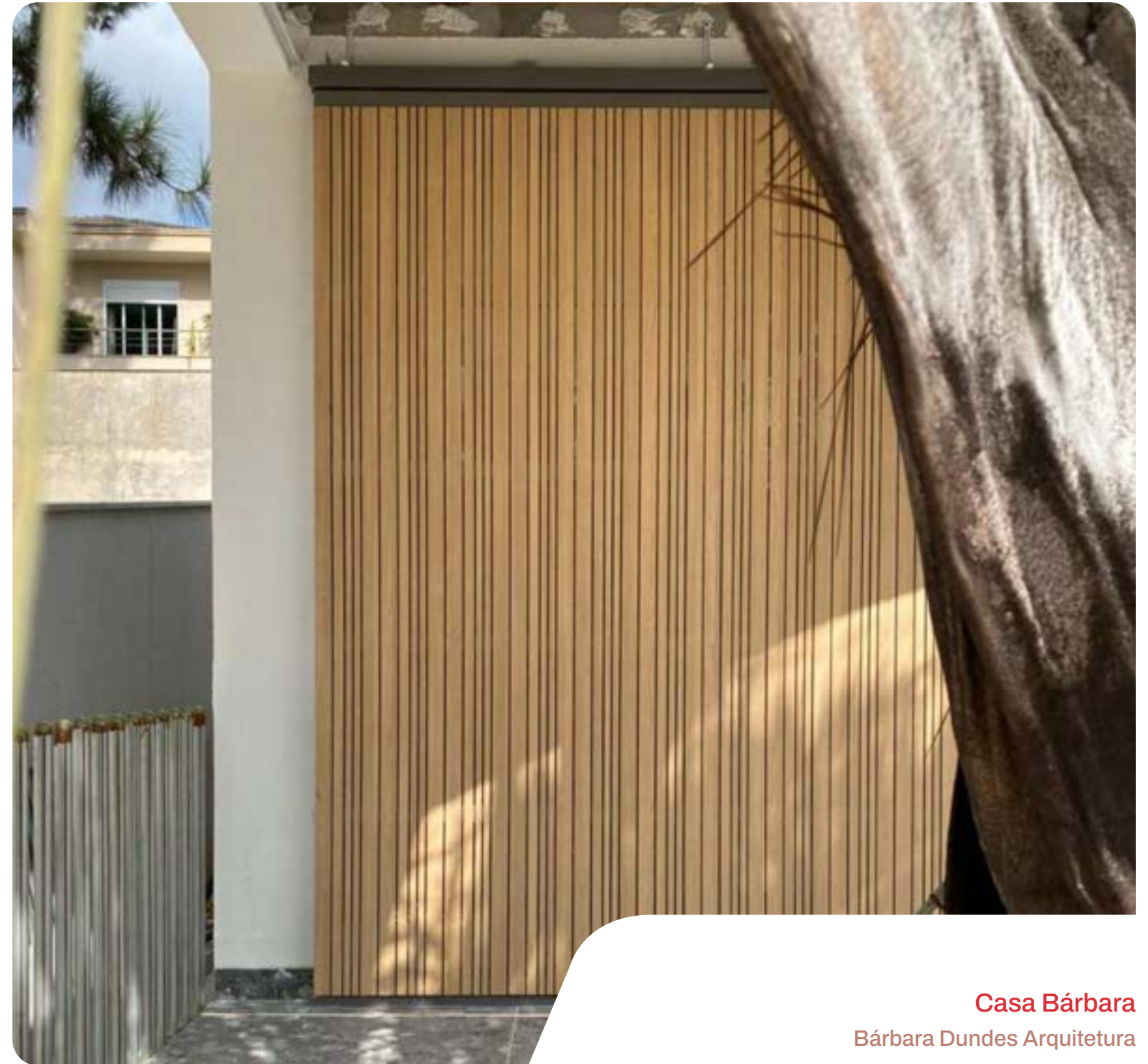




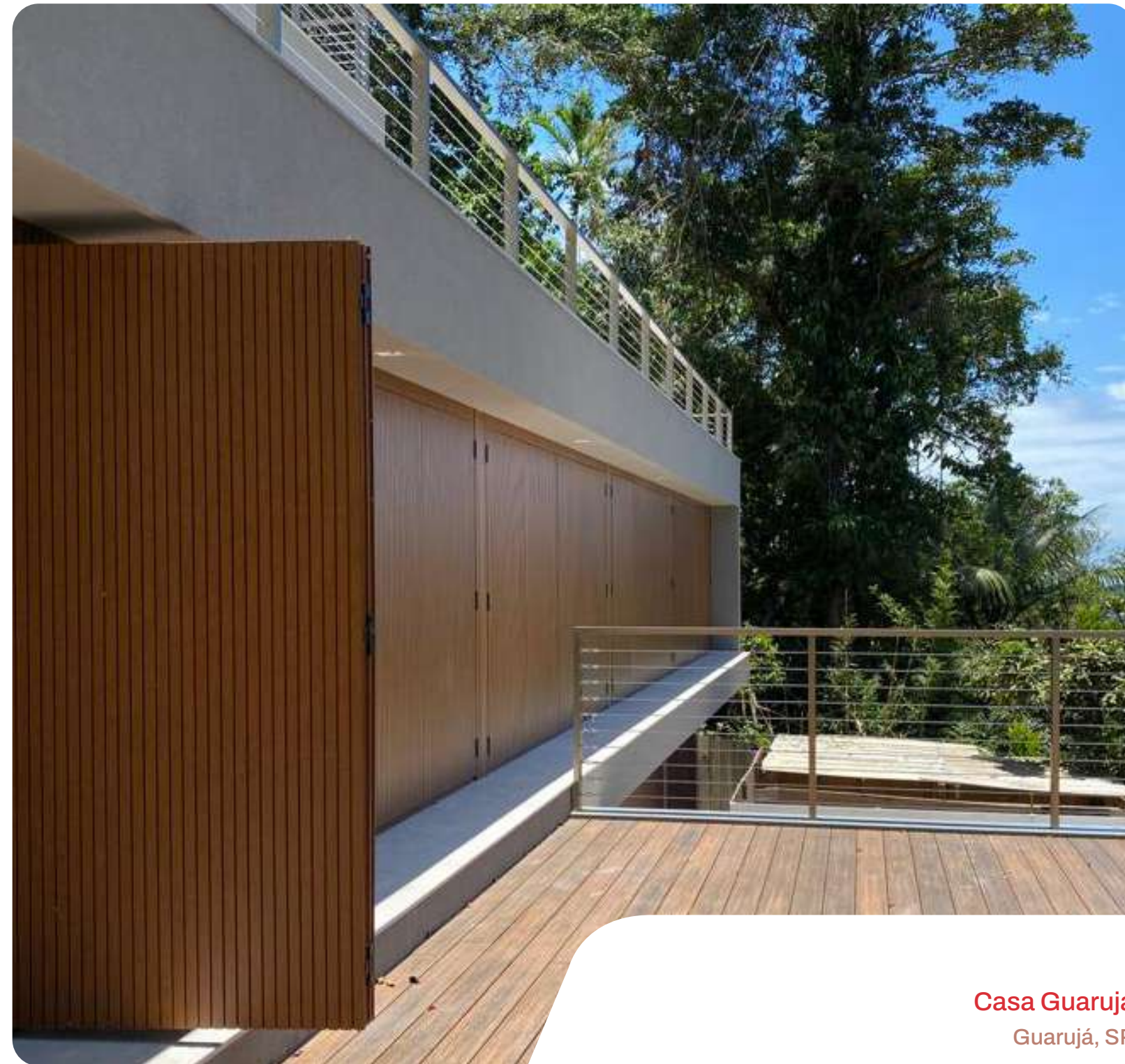
**Casa em Chapecó**  
Isadora Foresti Arquitetura  
Chapecó, SC



**Casa Ar**  
Trespa NW27  
SP

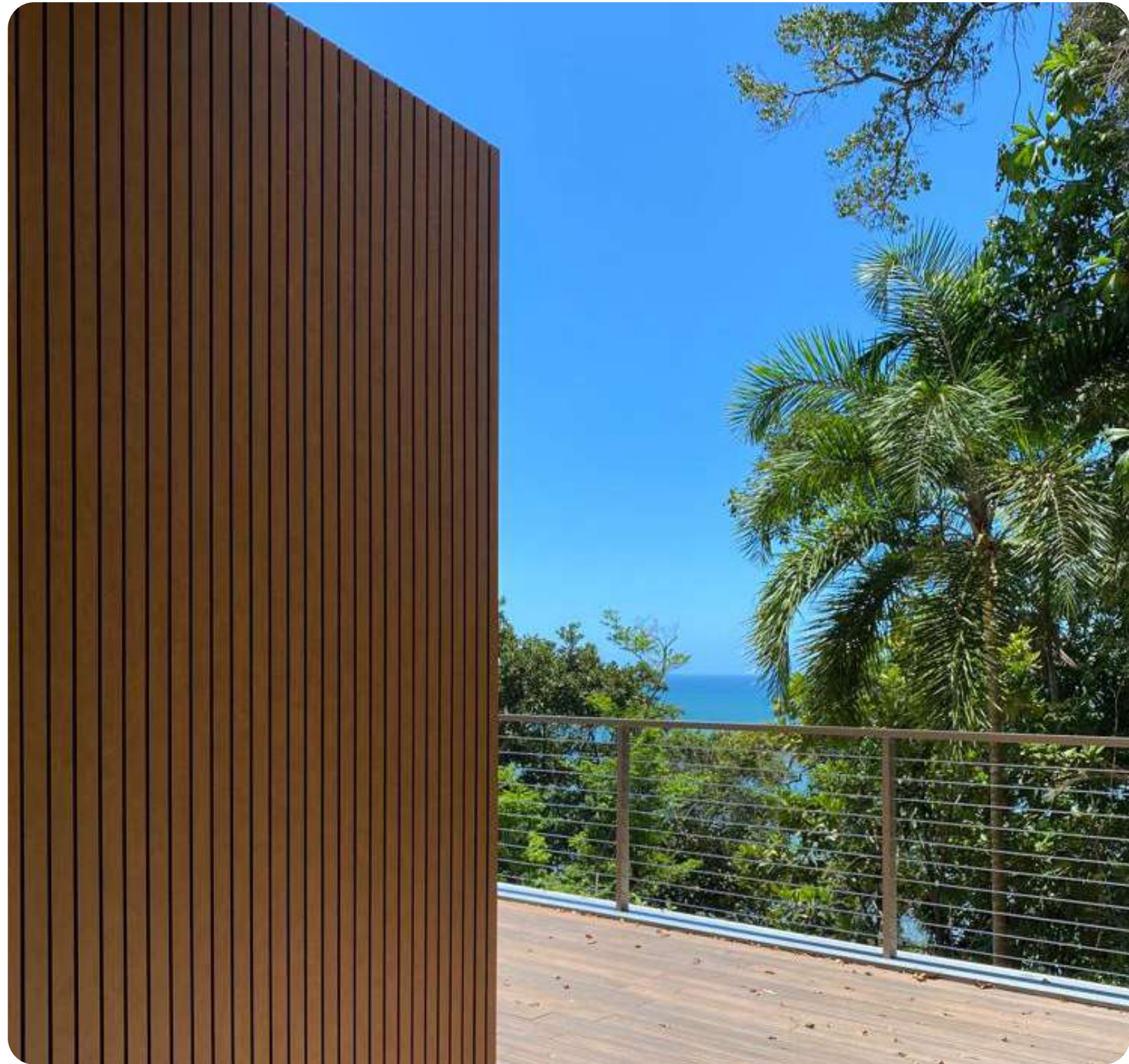


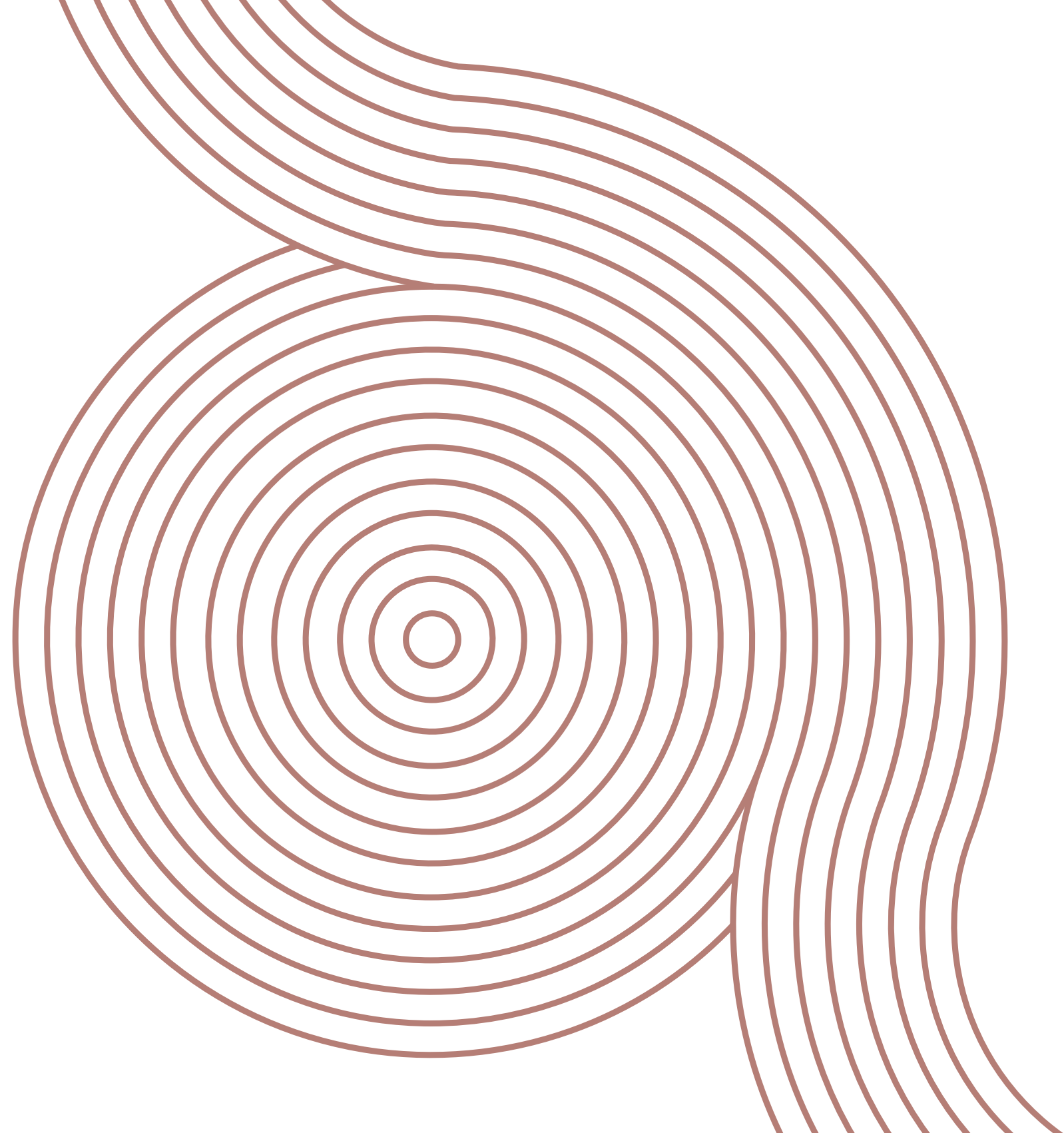
**Casa Bárbara**  
Bárbara Dundes Arquitetura



**Casa Guarujá**  
Guarujá, SP







# PAINEL HPL

---

**PROJETOS  
COMERCIAIS**

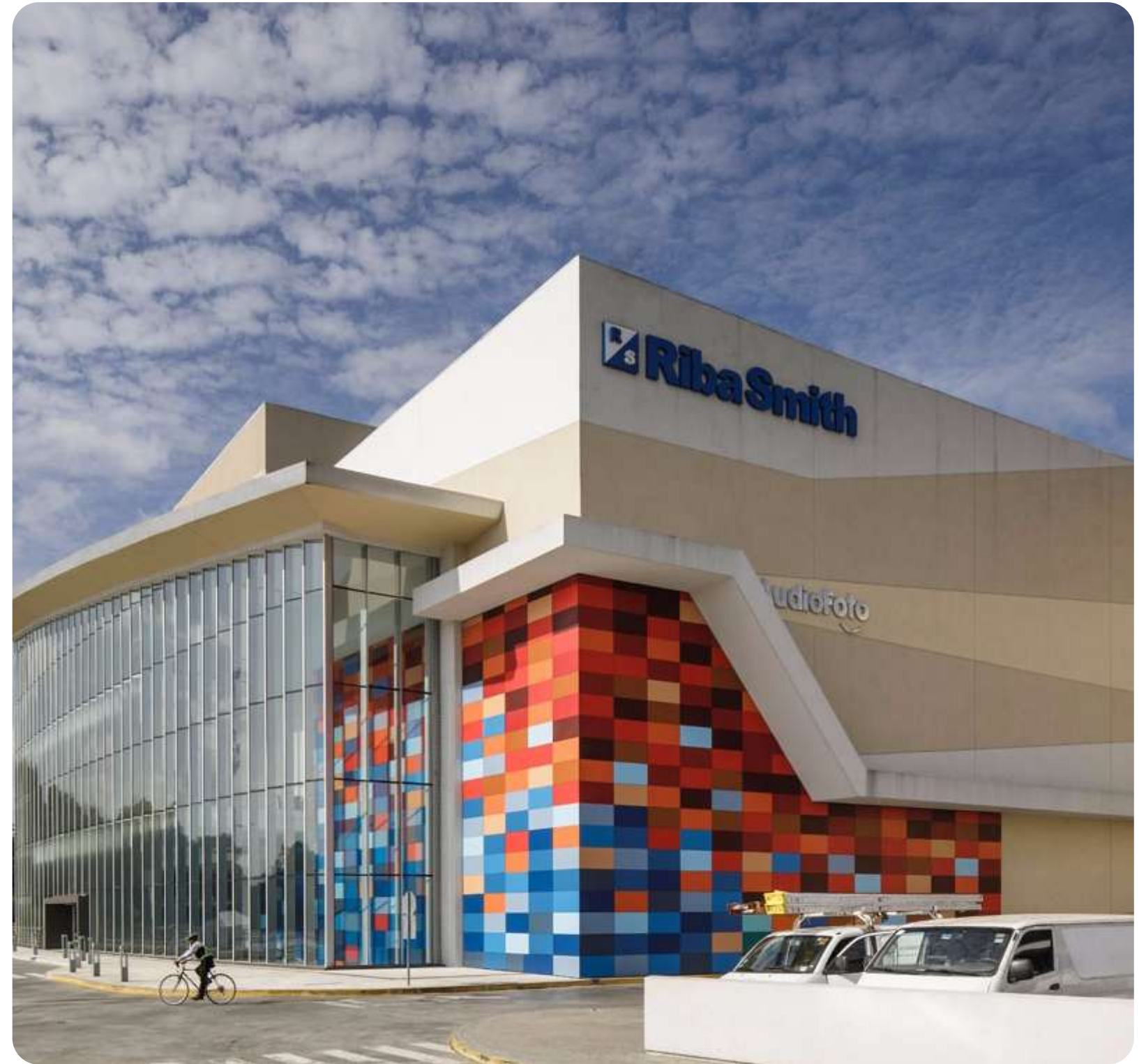


**Edifício Une**  
Gui Mattos Arquitetura  
São Paulo, SP





AltaPlaza Mall  
Cidade do Panamá





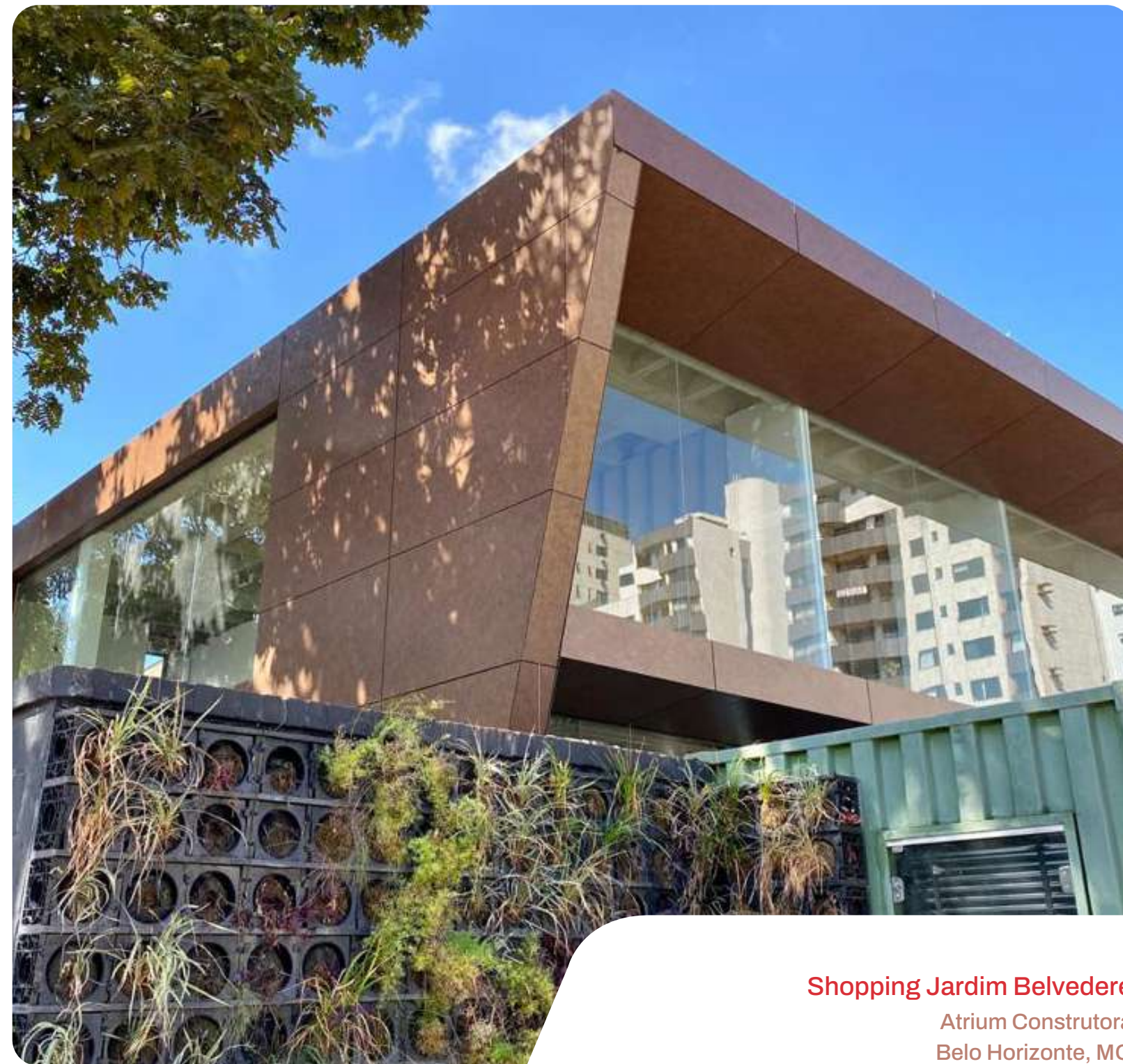
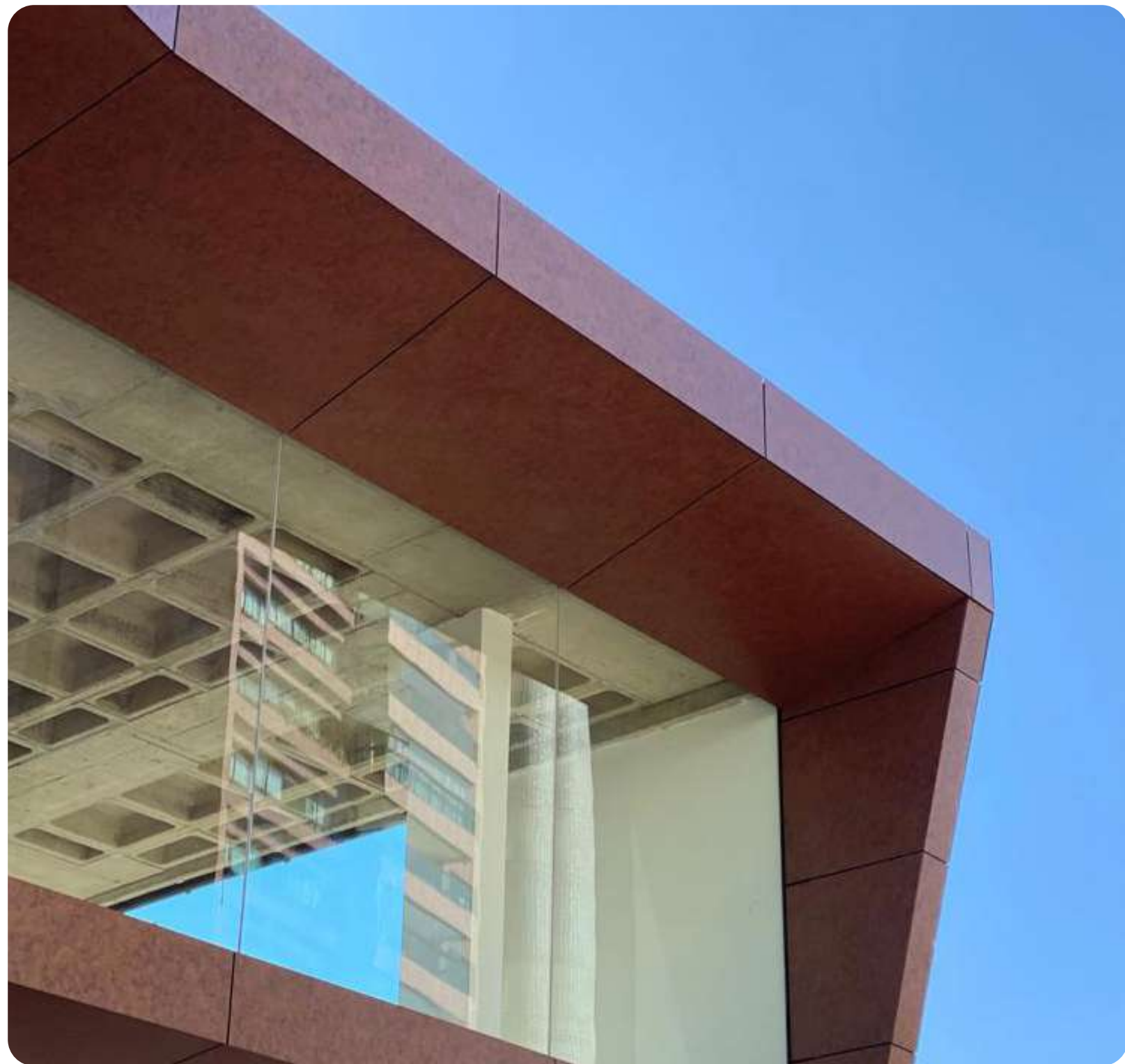




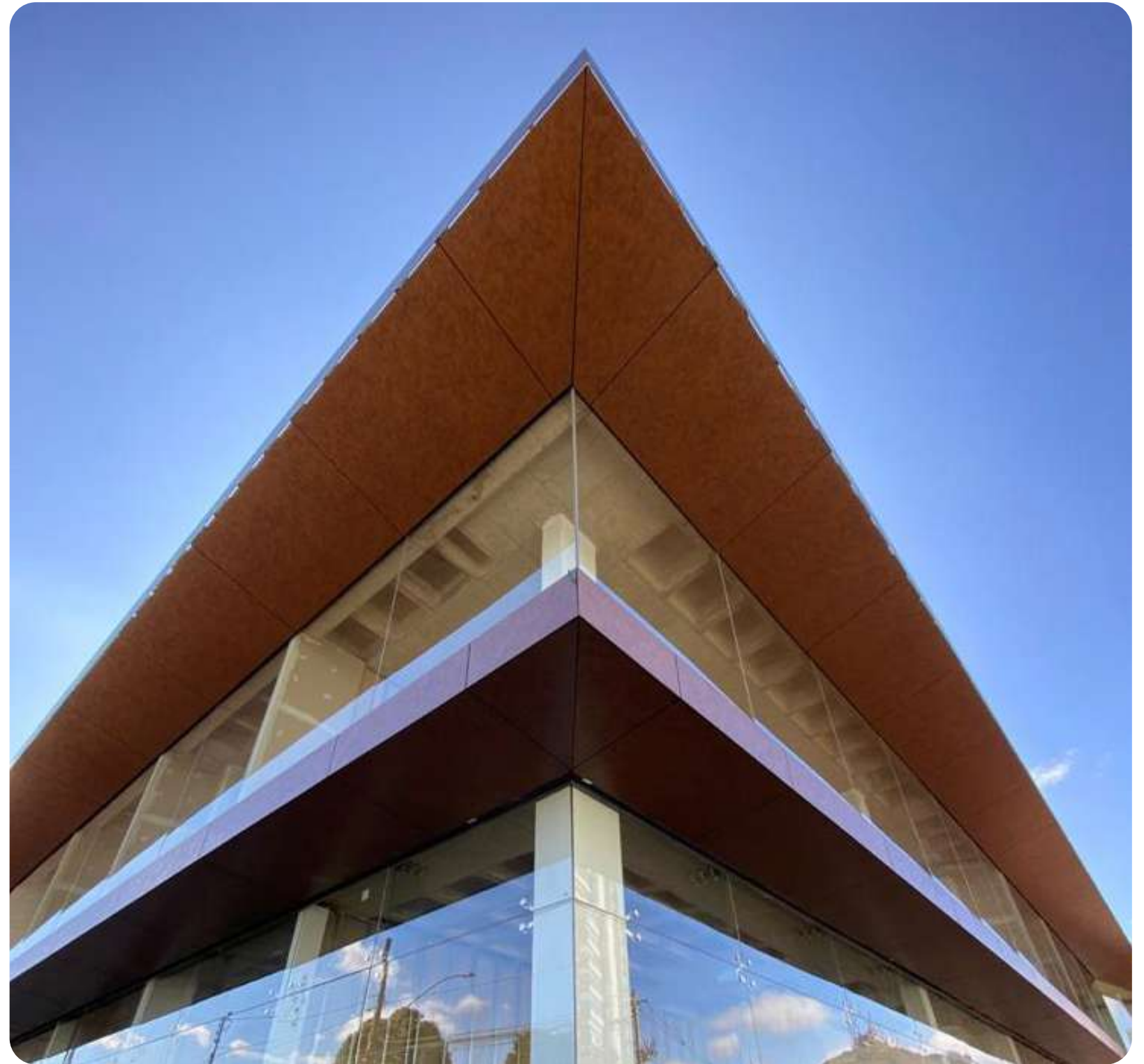


**Hospital Real D'Or Materno Infantil**

RAF Arquitetura  
Rio de Janeiro, RJ



**Shopping Jardim Belvedere**  
Atrium Construtora  
Belo Horizonte, MG







**BRASIL**  
Hospital e Maternidade



**Hospital Brasil**  
RAF Arquitetura  
São Paulo, SP

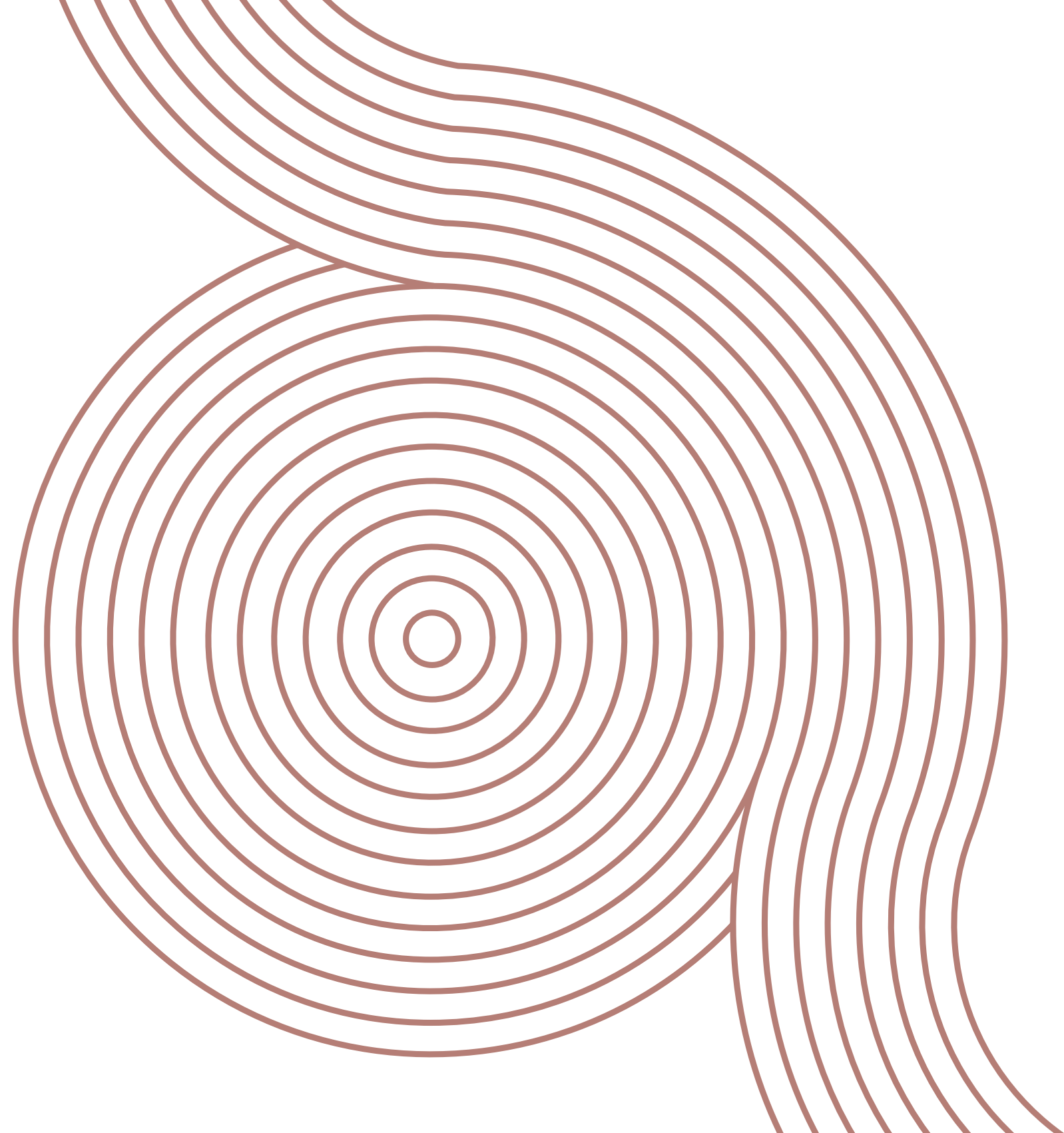
**IBRAHIM**  
Hospital e Tratamento











# PAINEL HPL

---

EDIFÍCIOS



**Edifício Azul**  
Isay Weinfield Arquitetura  
São Paulo, SP





**Condomínio Arruda 168**

Anastassiadis Arquitetos

Trespa NW14

São Paulo, SP







**Centro Cultural Ca Don José**  
Hector Luengo Arquitectos  
Canals, Espanha

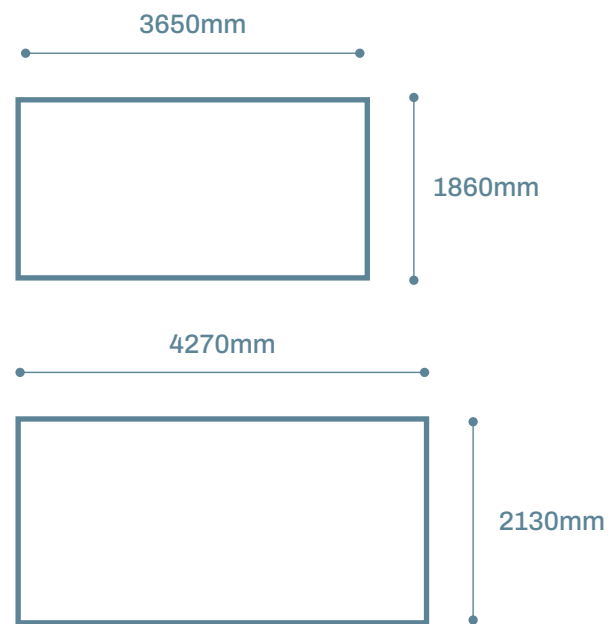




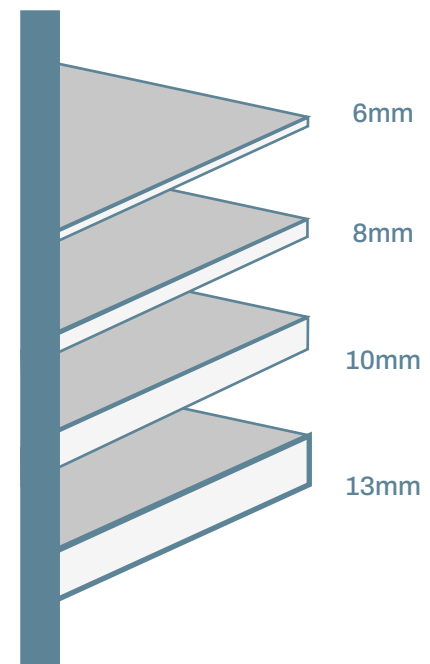
# PAINEL HPL

## SISTEMA DE FIXAÇÃO

1

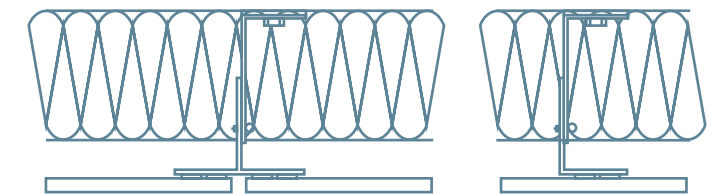


2

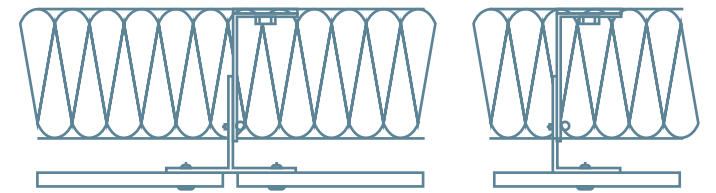


3

FIXAÇÃO OCULTA



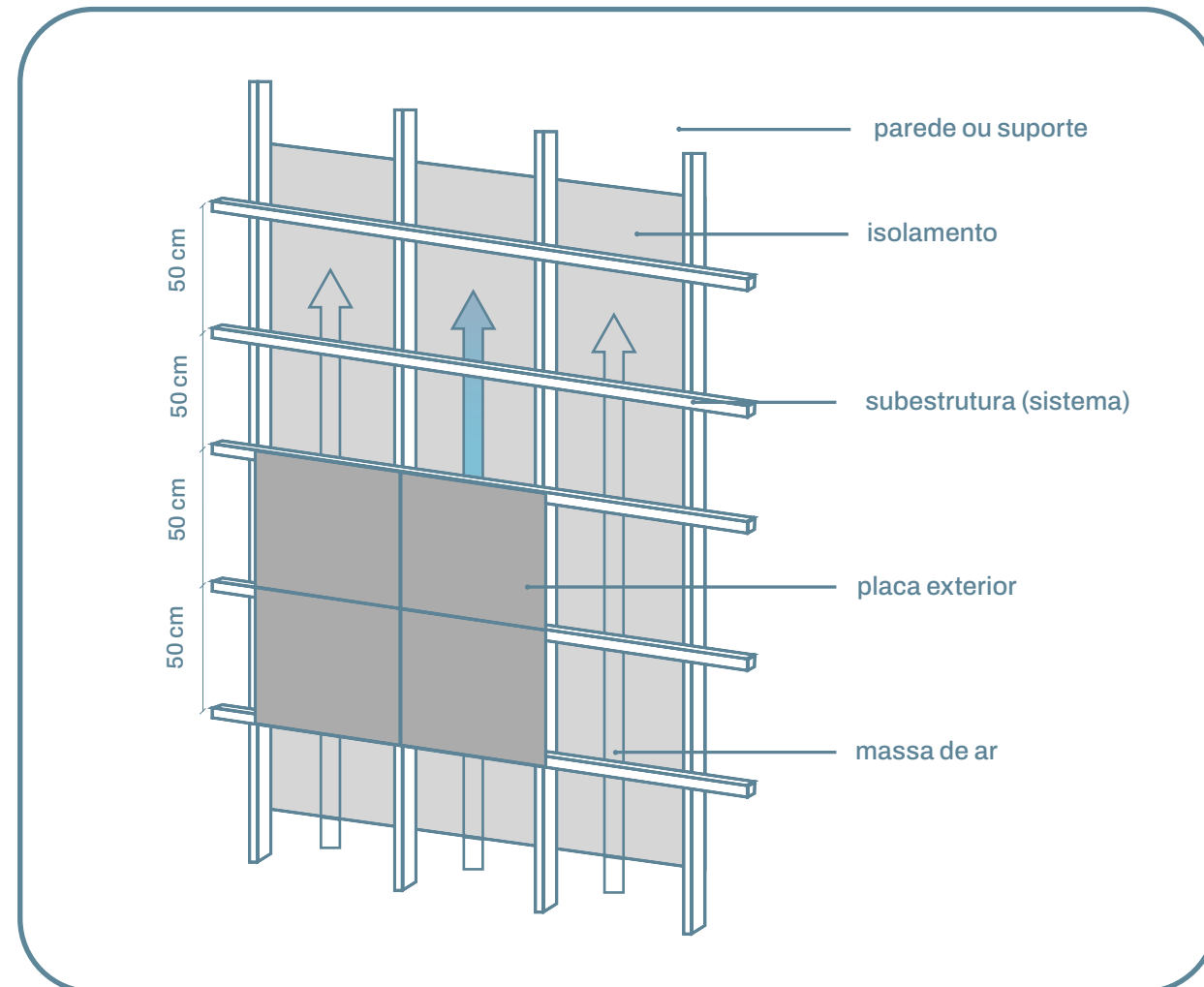
FIXAÇÃO APARENTE



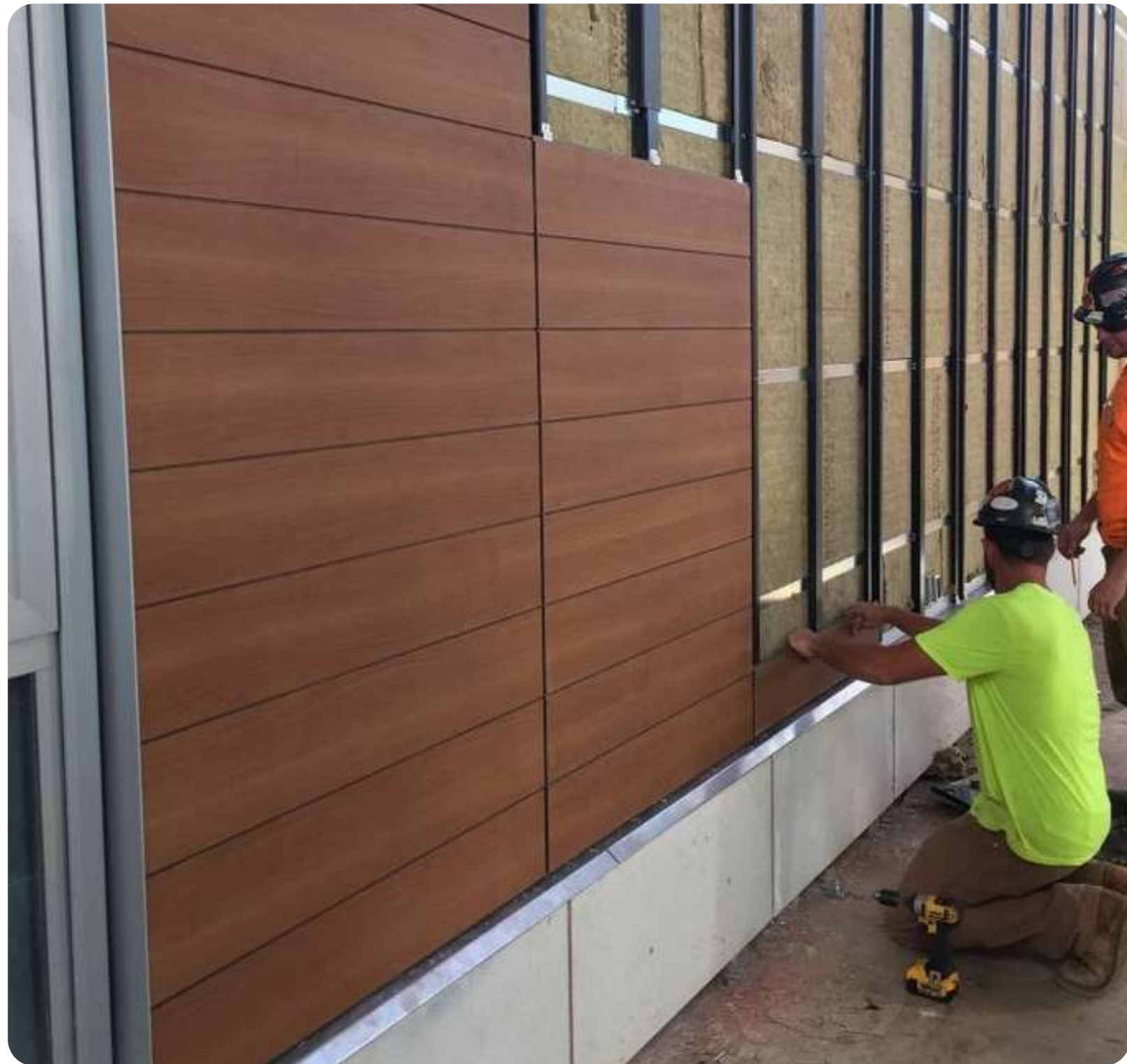
PLANTA

# PAINEL HPL

## VANTAGENS



- Maior conforto interno: tanto no calor quanto no frio;
- Uso reduzido de ar-condicionado;
- Bloqueio da radiação solar (isolante térmico);
- Drenagem através da entrada/saída de ar, eliminando problemas de umidade da estrutura;
- Manutenção reduzida na estrutura.



INSTALAÇÃO DAS PEÇAS

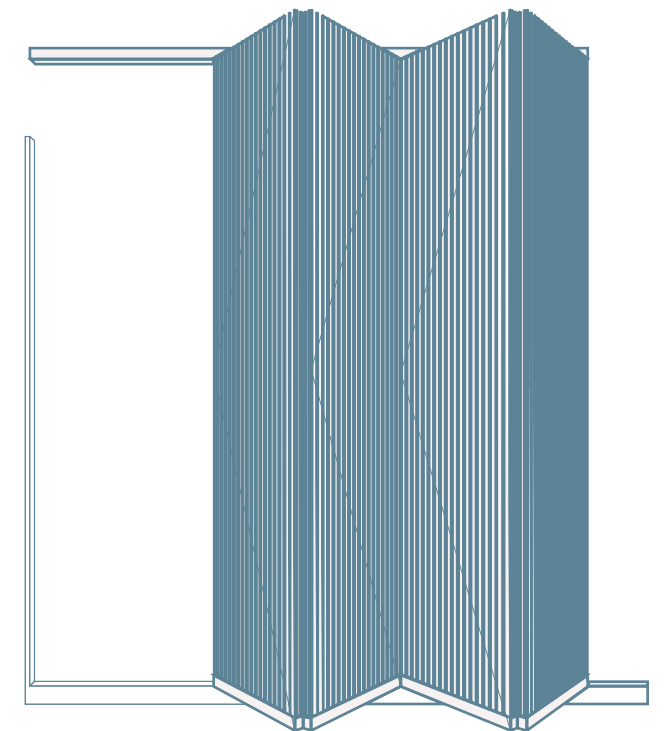


FIXAÇÃO DAS PEÇAS



# PAINEL HPL

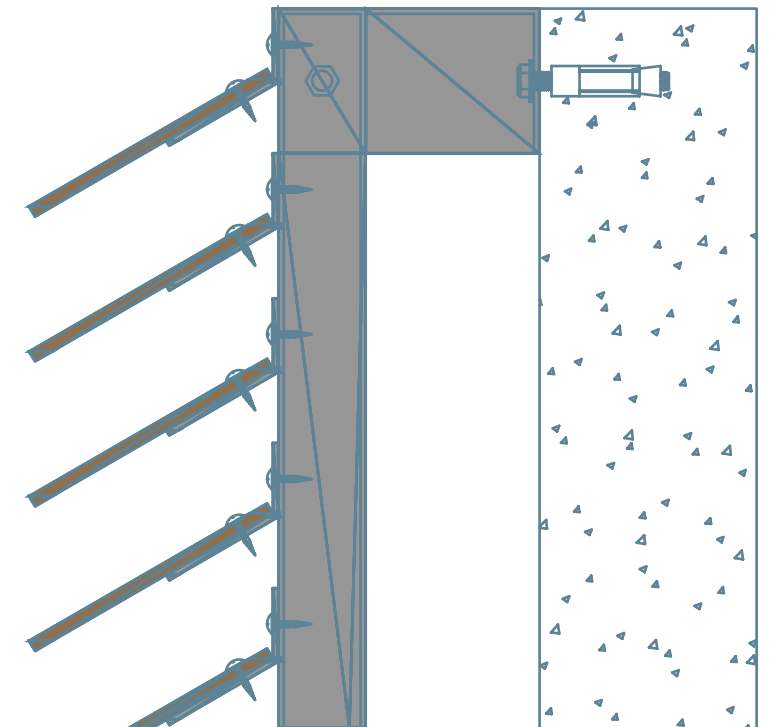
PORTAS E JANELAS CAMARÃO

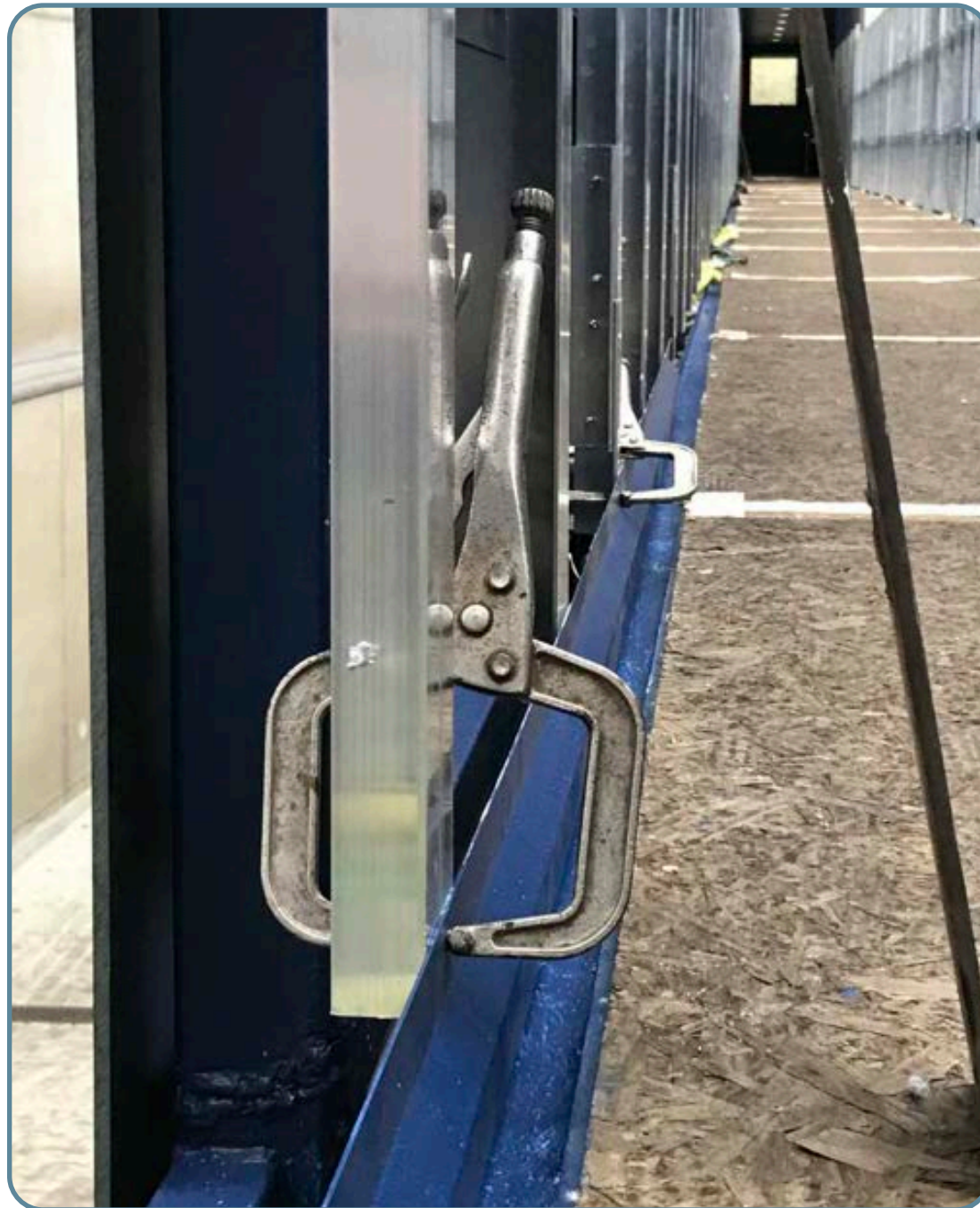




# PAINEL HPL

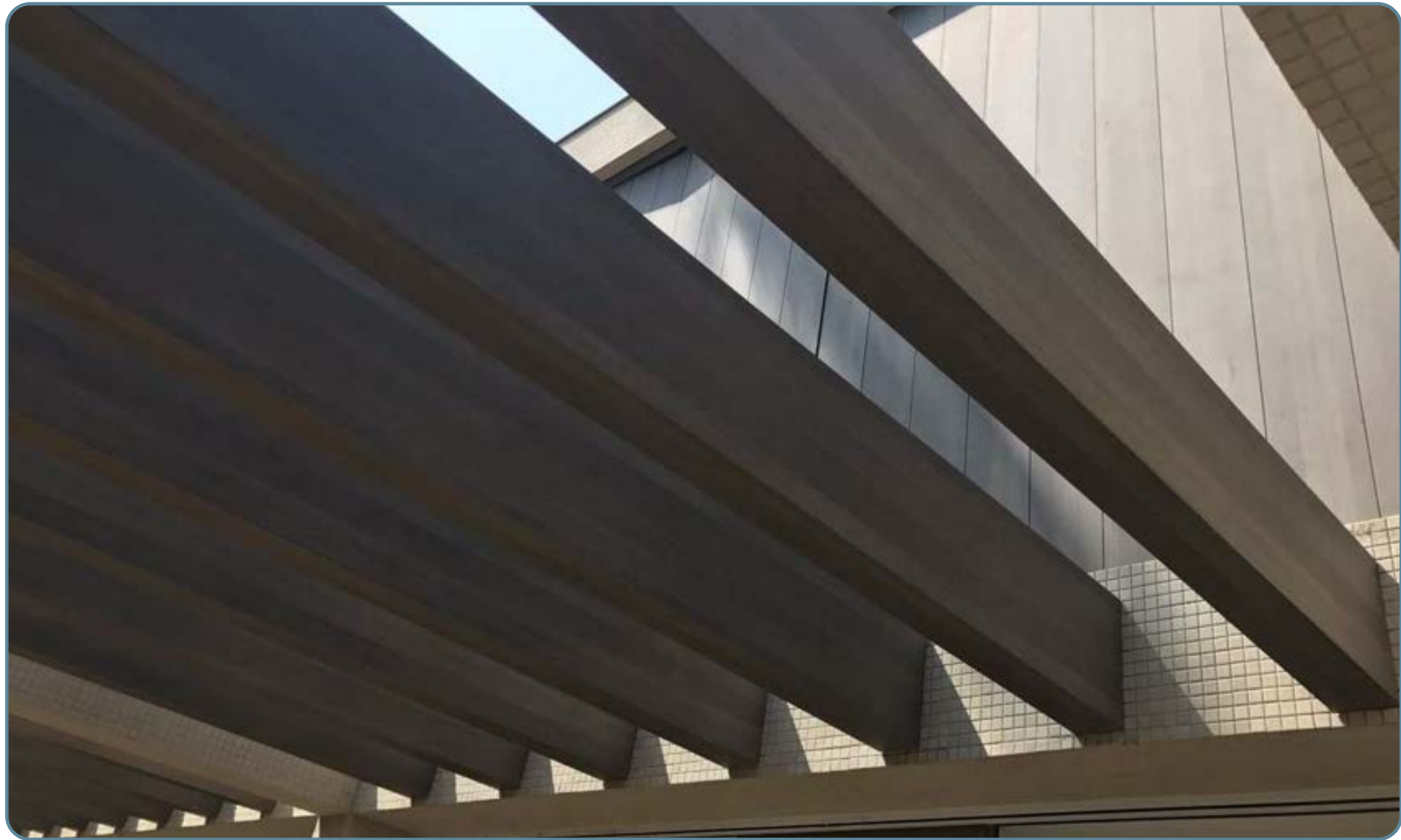
REFORÇO ESTRUTURAL





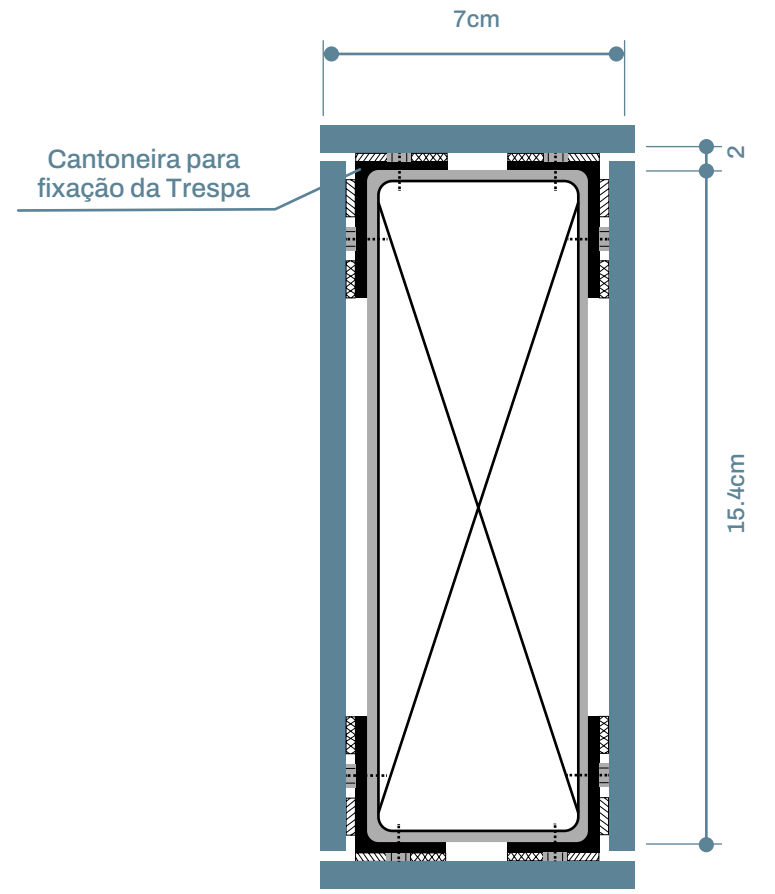
# PAINEL HPL

JUNTAS

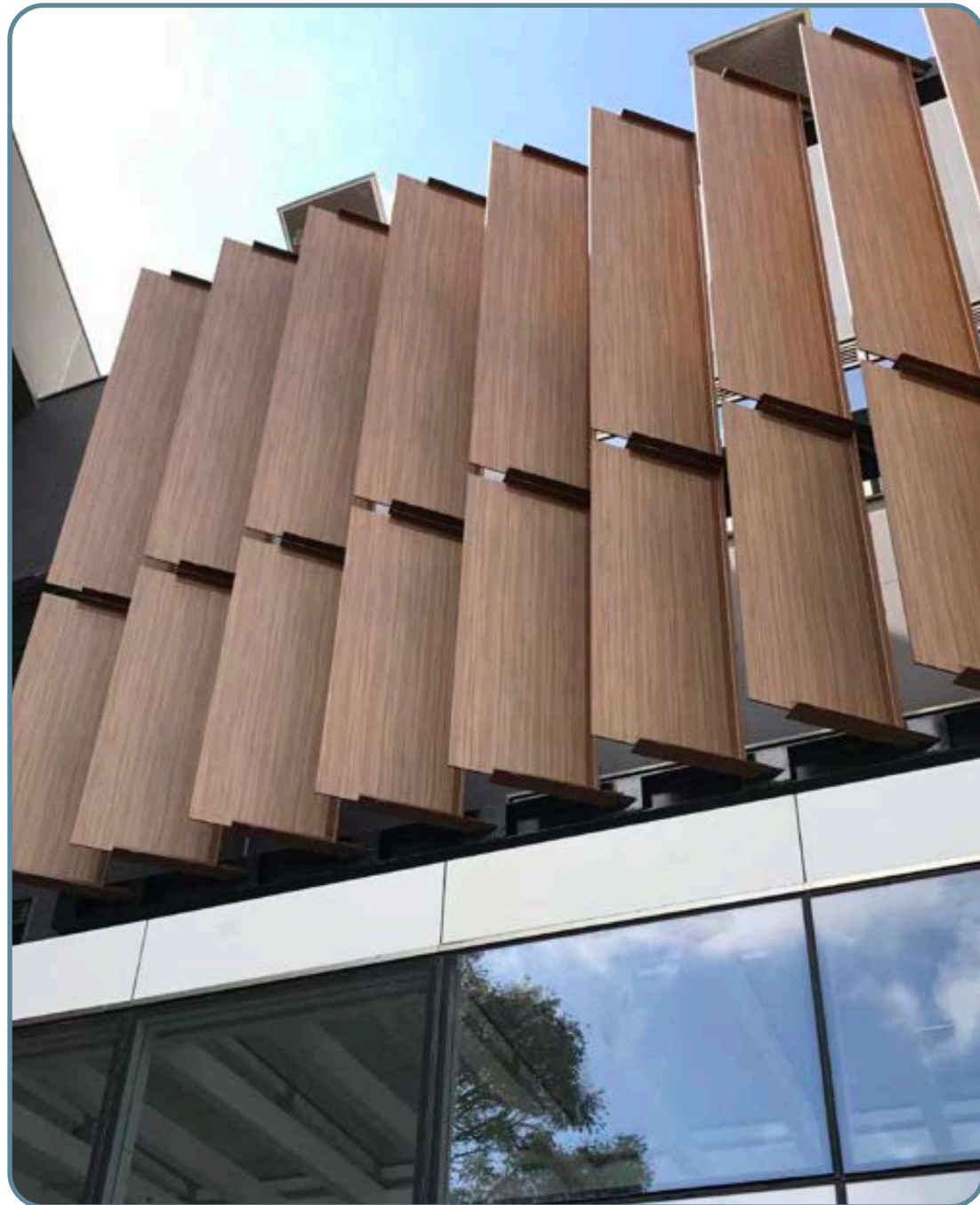


# PAINEL HPL

APLICAÇÕES DIFERENCIADAS

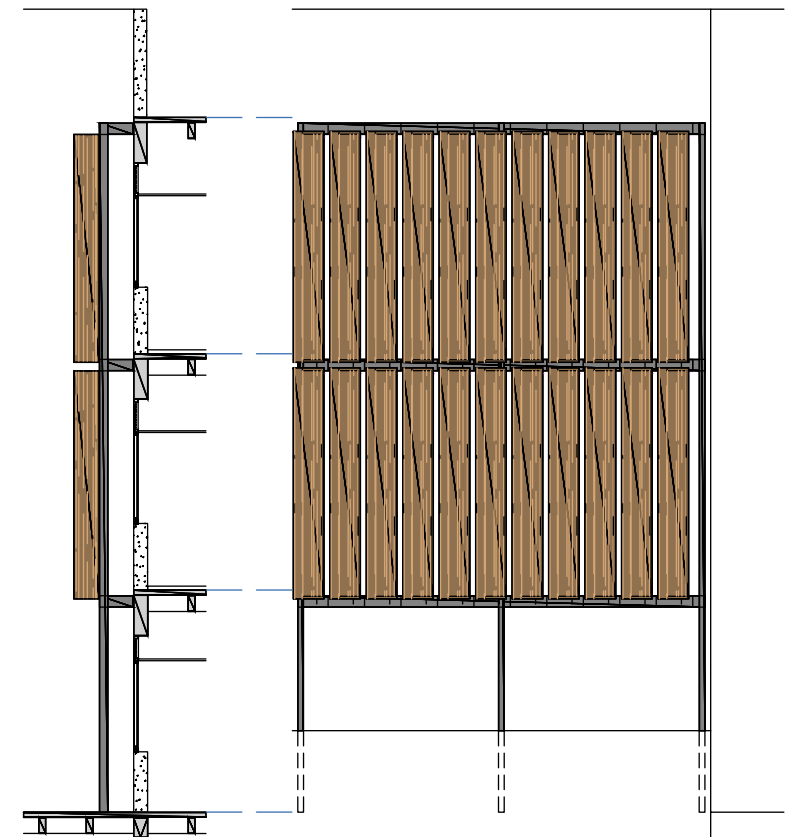


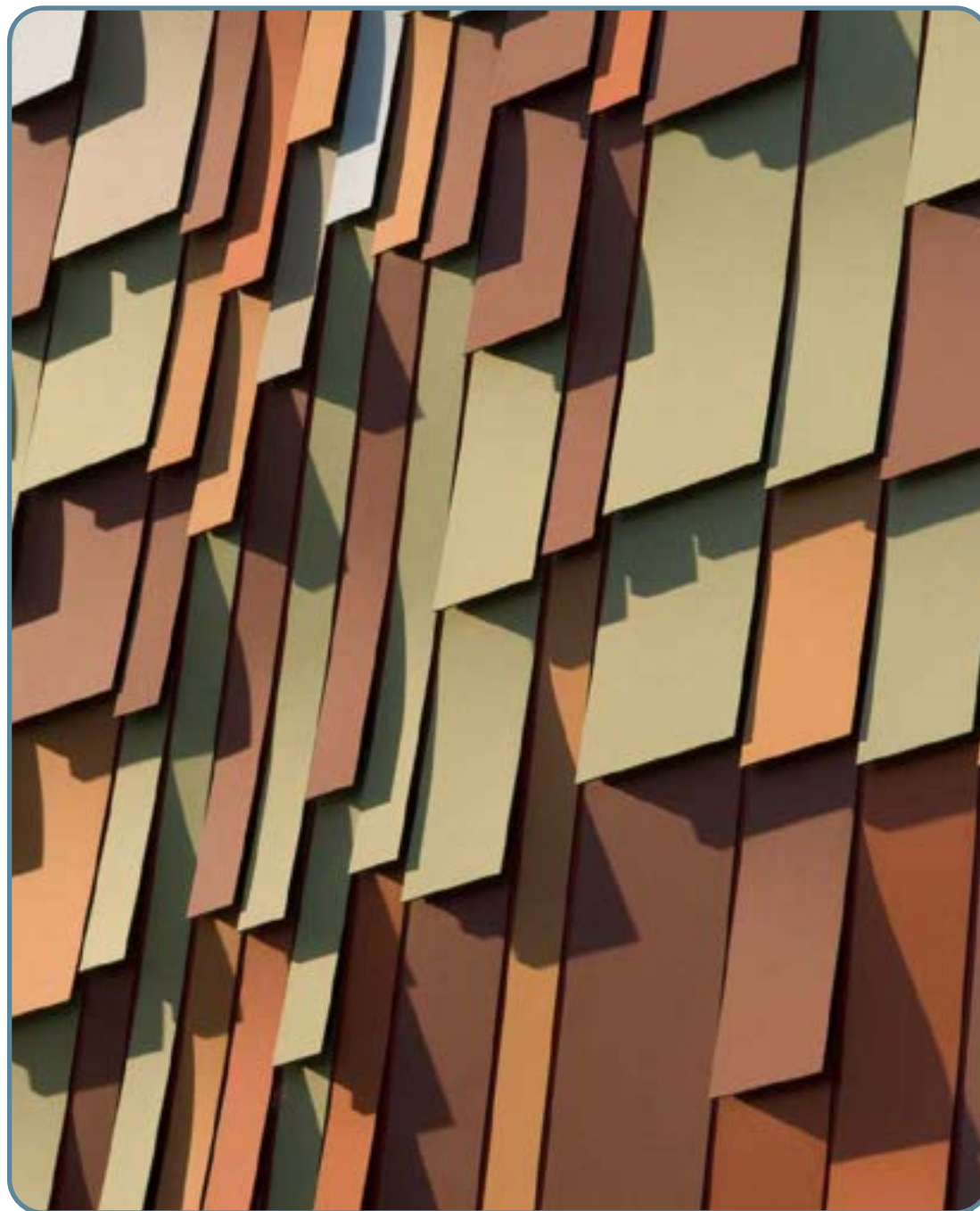




# PAINEL HPL

APLICAÇÕES DIFERENCIADAS





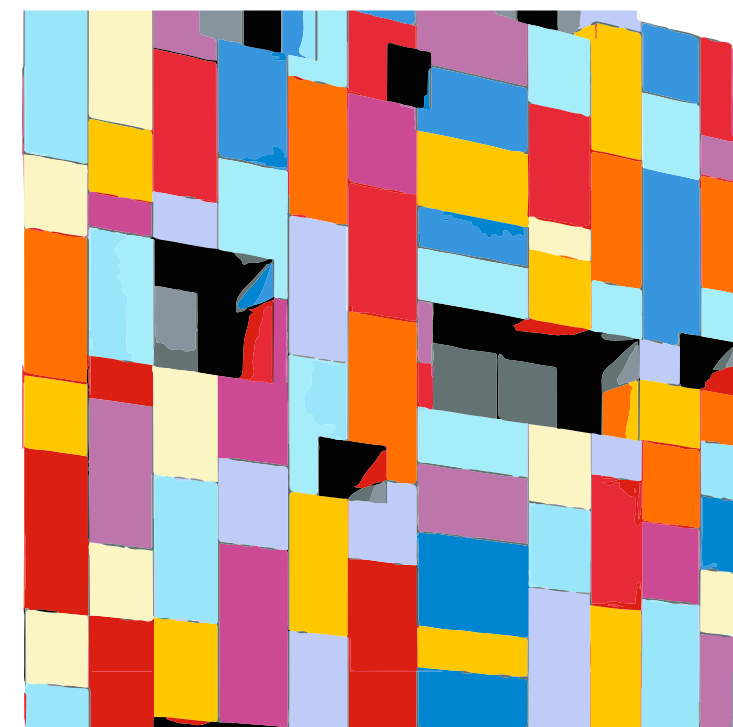
# PAINEL HPL

APLICAÇÕES DIFERENCIADAS



# POINEL HPL

COMBINAÇÃO DE CORES



# PAINEL HPL

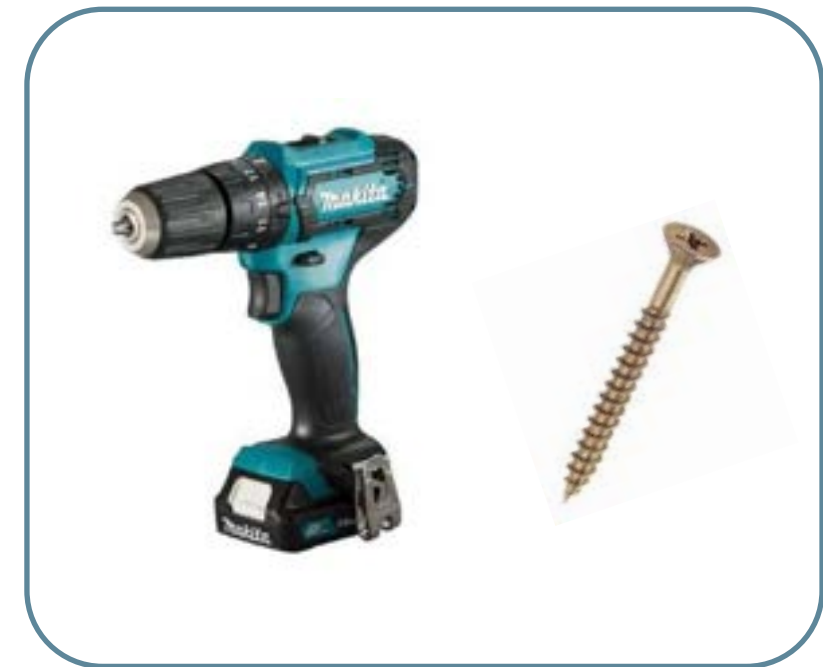
FERRAMENTAS DE INSTALAÇÃO



CORTADOR DE DISCO CIRCULAR



DISCO CIRCULAR PARA MADEIRA



PARAFUSADEIRA COM PARAFUSO  
PERFURANTE DE CABEÇA CHATA

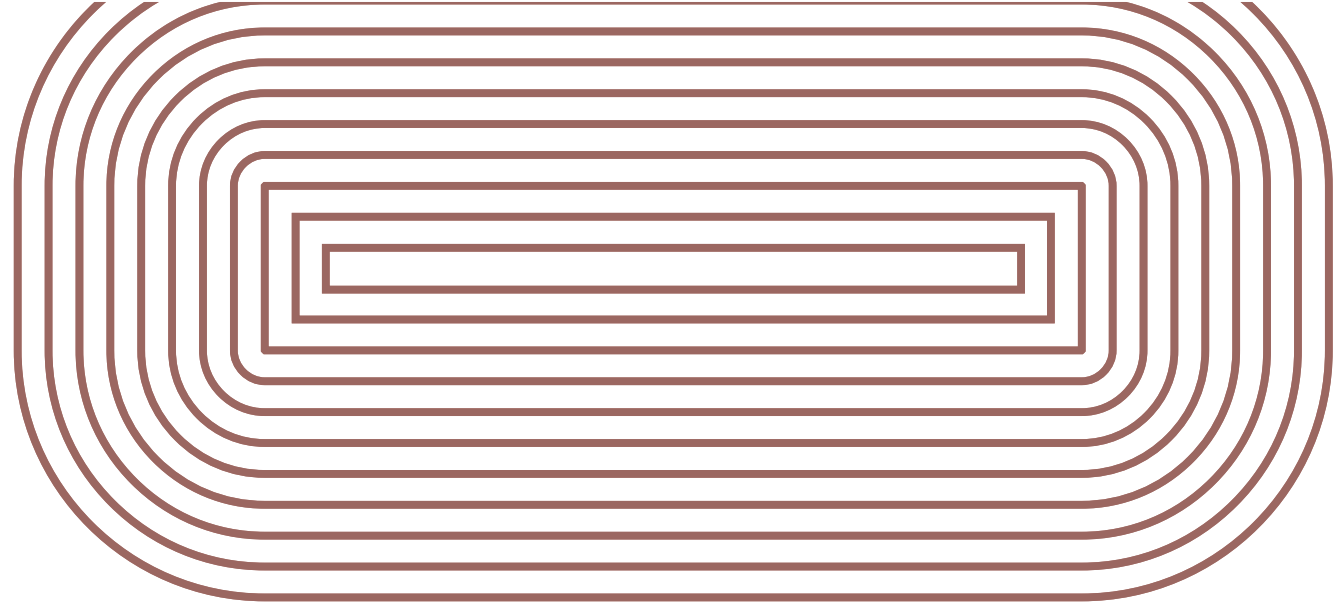


# PAINEL HPL

---

## RECOMENDAÇÕES DE USO E MANUTENÇÃO

As chapas devem ser armazenadas na horizontal (deitadas) sobre uma superfície plana. Certifique-se de que as placas fiquem em um espaço seco e ventilado, protegidas de luz solar direta, chuva e vento. O filme de proteção (liner) deve ser retirado imediatamente após a instalação do material. Evitar solventes e outros produtos corrosivos. O álcool reage ao policarbonato e causa manchas. Para limpezas simples, utiliza-se detergente neutro, esponja macia ou pano 100% algodão e água. No caso de sujeiras mais pesadas, pode-se utilizar um jato de água com baixa pressão. Recomenda-se limpeza periódica a cada 6 meses, a fim de manter as características do produto por mais tempo possível.



AMANTES DE BOA ARQUITETURA





arkos





[www.arkosbrasil.com.br](http://www.arkosbrasil.com.br)

 arkosbrasil



 +5511971196692